

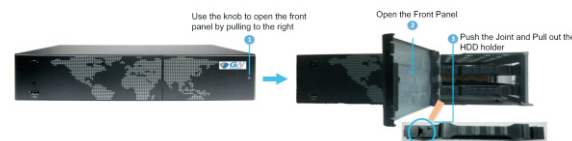


Quick Start Guide

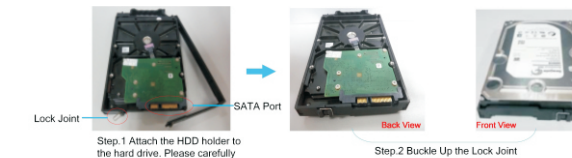
NVR

1 Install Harddrives

1. Open the front panel



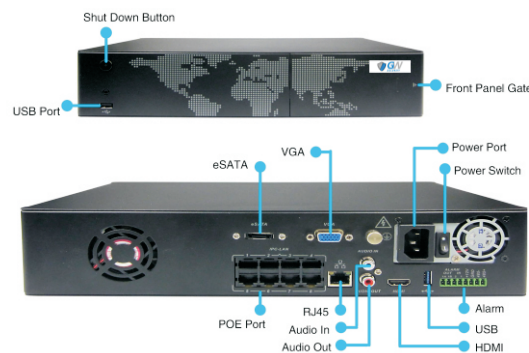
2. Attach the HDD holder to the HDD



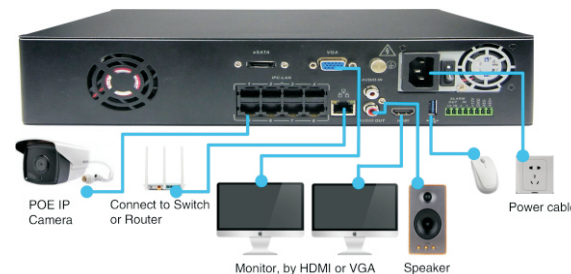
3. Slot the hard drive back into the hard drive bay and close the front panel, as shown in the picture.



2 Appearance

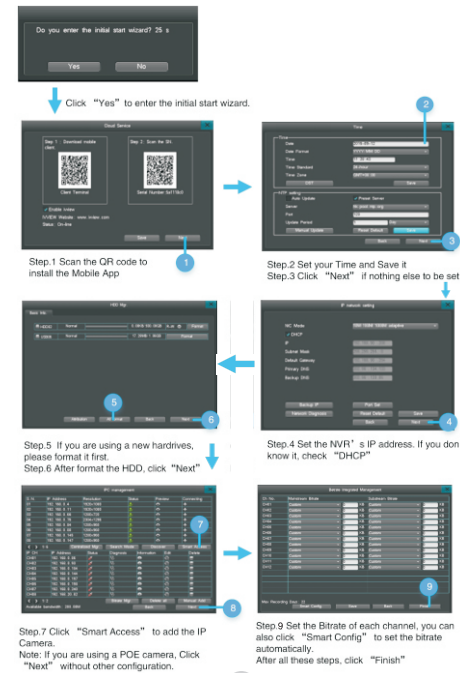


3 NVR Connection Diagram



4 Power on the NVR

After installing the harddrive, power cable, monitor, and mouse, flip the power switch on the back panel to the on position, then follow the startup wizard prompts.



5 Add Camera to the App

Install GW Mobile App

The "RealView Pro" mobile app can be downloaded by the following methods:
1. The "RealView Pro" is available for download from "Play Store" for Android and "App Store" for iOS.
2. Scan the App QR code found in the "Cloud Service Menu". Click on the bottom tool bar of the device's interface. "QR Code Reader" is required to download the App.
You will see the following icon on your phone when the installation is completed.



APP download QR code (you can scan it directly)

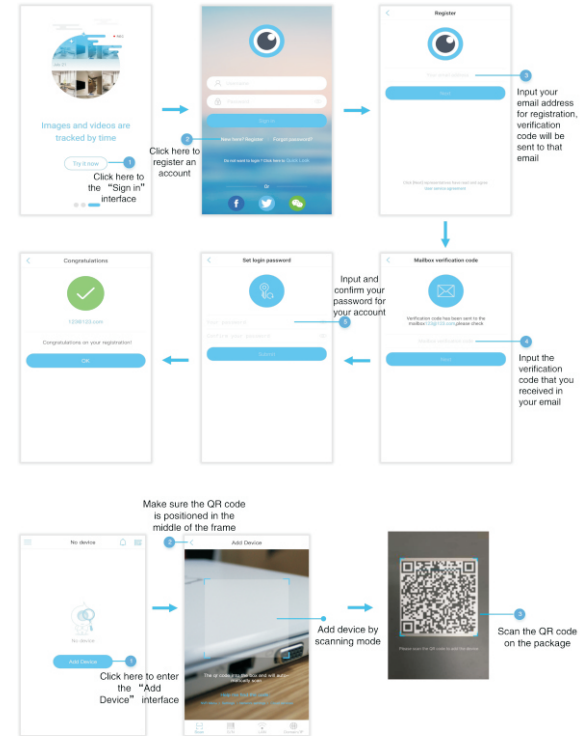


RealView Pro

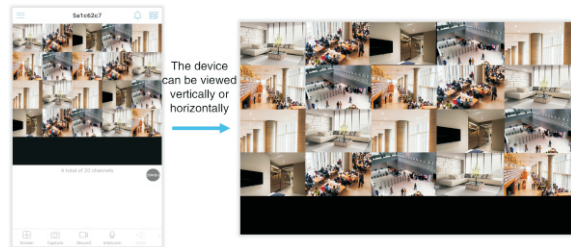


Register your Account

Open the App - Register an account as new user before sign in (*You must register your account before adding the device*)

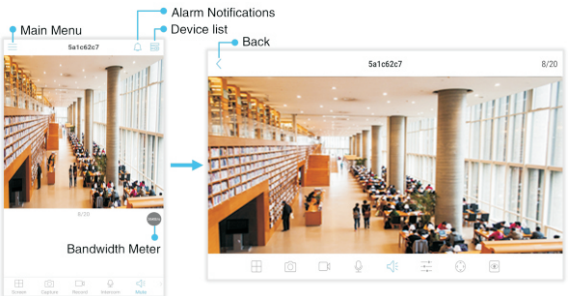


You can watch the live preview once the device is added successfully.



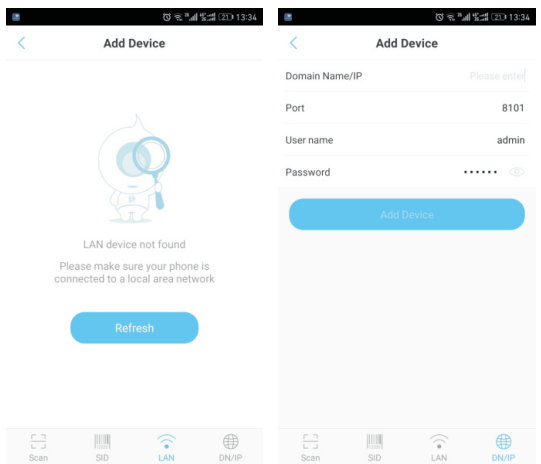
Operation Interface

When viewing multiple channels, you can “double tap” a channel to enter it's full-screen display mode. Tap one more time to bring up available functions.



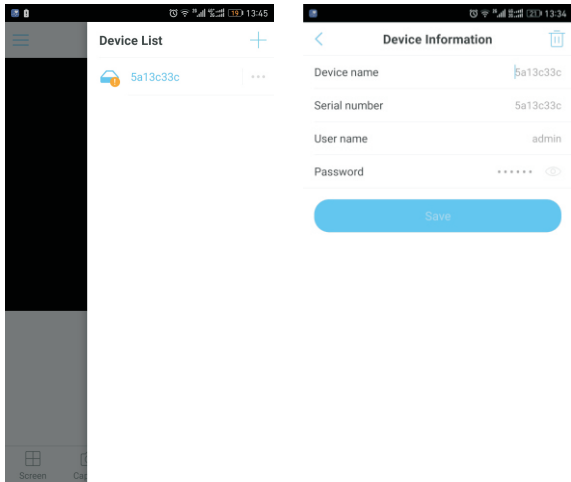
P.S: If the camera is added successfully, the camera will be bound to your account and cannot be added by another user. You can add several Cameras under your account. If you want to access the cameras with other mobile devices, please log in with your credential on other mobile devices.

- There are 3 other ways to add a device under your account
1. Search in LAN
 2. By inputting the QR code manually.
 3. By inputting the IP address and Port manually



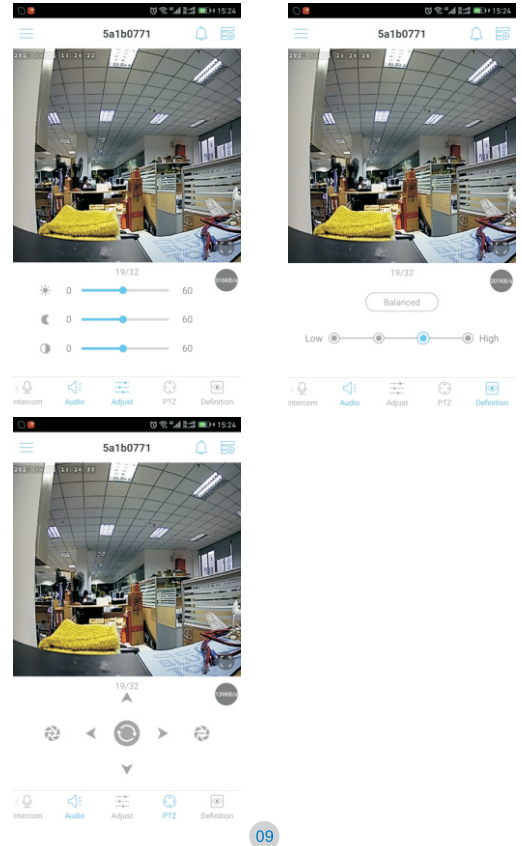
Delete a device

choose a device, then click the "trash" to delete the device.



PTZ,Video Adjust,Capture,Audio,Intercom

In single channel preview,you can do some operations about this channel,such as capture,record,intercom, PTZ, Video adjust,etc.Based on IP camera functionality.

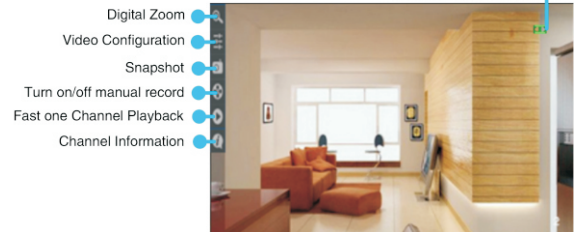


6 Live View Interface Introduction

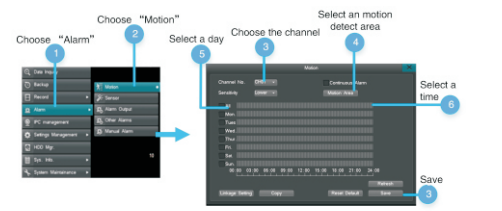


- Main menu
- NVR IP Information
- Cloud service
- Turn off the Botton Bar on top
- Unlocked the interface
- Lock the interface
- Channel Layout
- Switch the channel
- Fast Multi-Channel Playback
- Alarm status
- NVR Temperature
- Button Bar on top

Left one click a channel, it will show a mini menu of this channel



6 Motion Detect



Open the main menu --- Data Inquiry



Welcome to GW Security Inc.

Official Website: www.gwsecurityusa.com
Email: support@gwsecurityusa.com
Business Hour: Monday-Friday from 9:00am-5:30pm PST
Tel: 626-350-0555