

# User Manual of VMS

Version 1.1

# Contents

Introduction.....	1
Chapter 1 Getting Start.....	2
1.1 Login and Logout.....	2
1.1.1 Login.....	2
1.1.2 Switch user.....	2
1.1.3 Logout.....	3
1.2 Control panel.....	3
Chapter 2 Device management.....	5
2.1 Add devices.....	5
Chapter 3 Preview.....	9
3.1 Interface.....	9
3.2 Device group.....	10
3.3 View.....	11
Chapter 4 Playback.....	12
4.1 Playback.....	12
Chapter 5 Configuration.....	14
5.1 Configuration.....	14
Chapter 6 Account management.....	16

## Introduction

Thank you for using our VMS, if you have any problems or doubts when using the products and software, please contact us anytime.

### About this user manual

This User Manual is for VMS software, it is used as a guide. The photos, graphics, charts and illustrations provided in this user manual are only used to explain and illustrate the purpose, they may be different from the specific product, please refer to the actual object.


In this User Manual it is possible that we have some incorrect, or some features and operations that are not compatible with the App, or other printing mistakes. We will update the content of this User Manual according to the features upgrading or verifying, and we will improve and upgrade the description of the products. The new content may not be notified in this User Manual.

# Chapter 1 Getting Start

## 1.1 Login and Logout

This chapter describes login, switching user and logout.

### 1.1.1 Login

After installation, double click  icon in the PC desktop. The login interface shows as **Figure 1-1**.

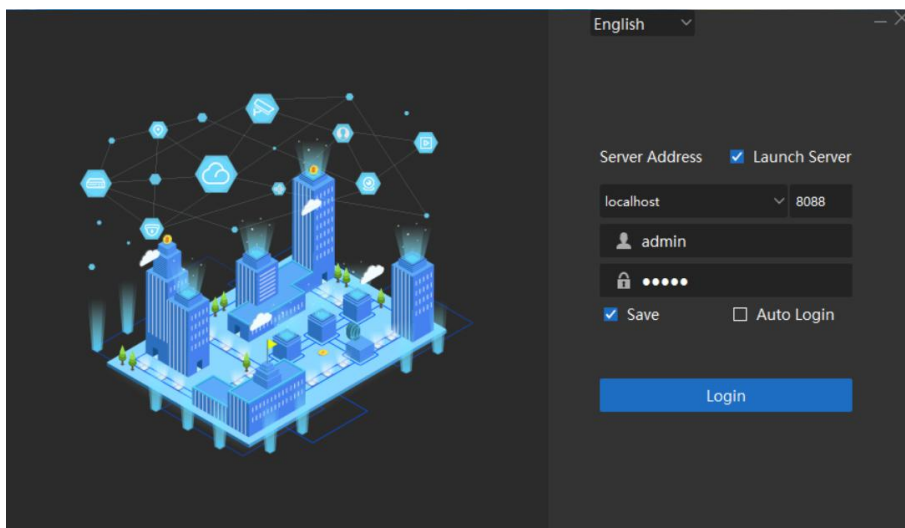


Figure 1-1 Login



**User name:** Default name is “admin”.




**Password:** Default password is “admin”.

**Save:** Save username and password. It is checked by default.

**Auto Login:** Automatically login next time.

**Language:** Support English, 简体中文.

### 1.1.2 Switch user

After login, you can switch users on the status bar. Click  which is next to the login user name, then click “Switch User” menu. A confirmation window will pop up, shown as **Figure 1-2**. Click “OK” button, VMS will logout, then you can login with other user name.

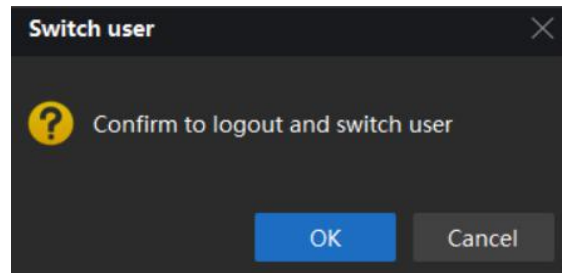


Figure 1-2 Switch user

### 1.1.3 Logout

Click  button and input current user's password to exit VMS.

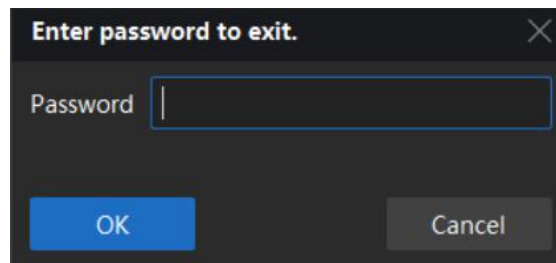


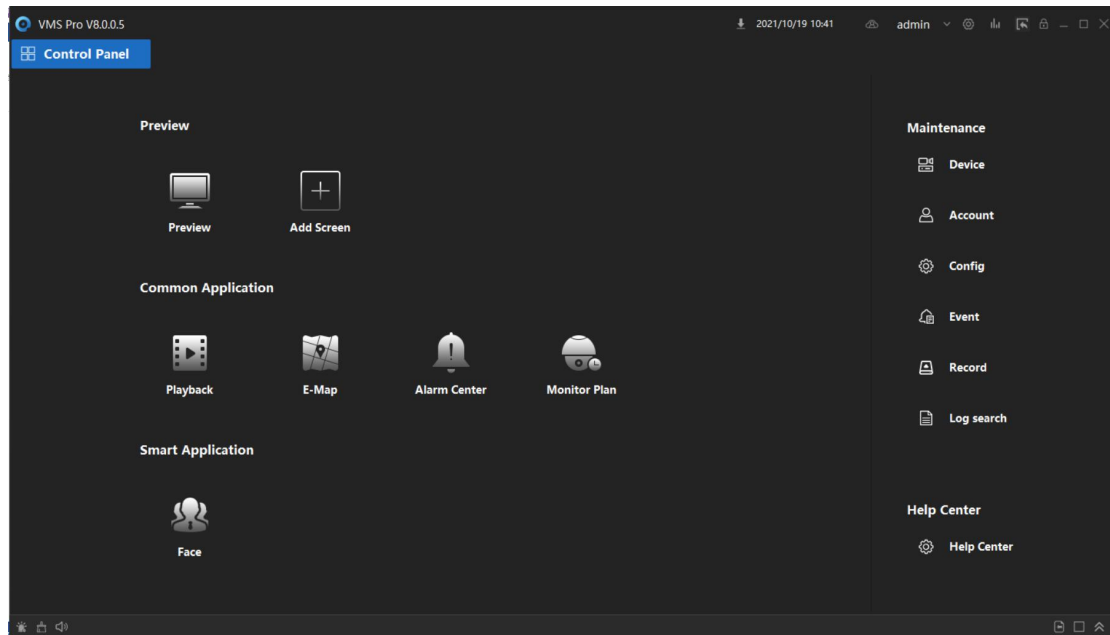
Figure 1-3 logout

**Notes:**








- For security, please modify your password after login.
- Do not enable save password or Auto Login in public PC.

## 1.2 Control panel

All the functions can be found in this page, shown as **Figure 1-3**.




**Figure 1-3 Control Panel**

Items	Description
 Preview	Device List, Live view, Screen divisions, PTZ controlling, RemoteConfig setting, Stream type setting, Local record/ snapshot.
 Add Screen	Add a new preview screen.
 Playback	Remote and local records/pictures search, view, playback and download. Enable cut or snapshot during playback.
 Account	Manage users, and assigned permissions.
 Device	Search, add, modify and delete devices.
 Config	VMS base configurations, Record/Snapshot save path and other settings.
 Record	Record schedule, record specified channels to local without VMS running.

**Table 1-1 Control Panel description**

## Chapter 2 Device management

At least one device need to be added firstly before previewing. Click  button in control panel to enter device management interface, then you can add, or modify, or delete devices, shown as **Figure 2-1**.

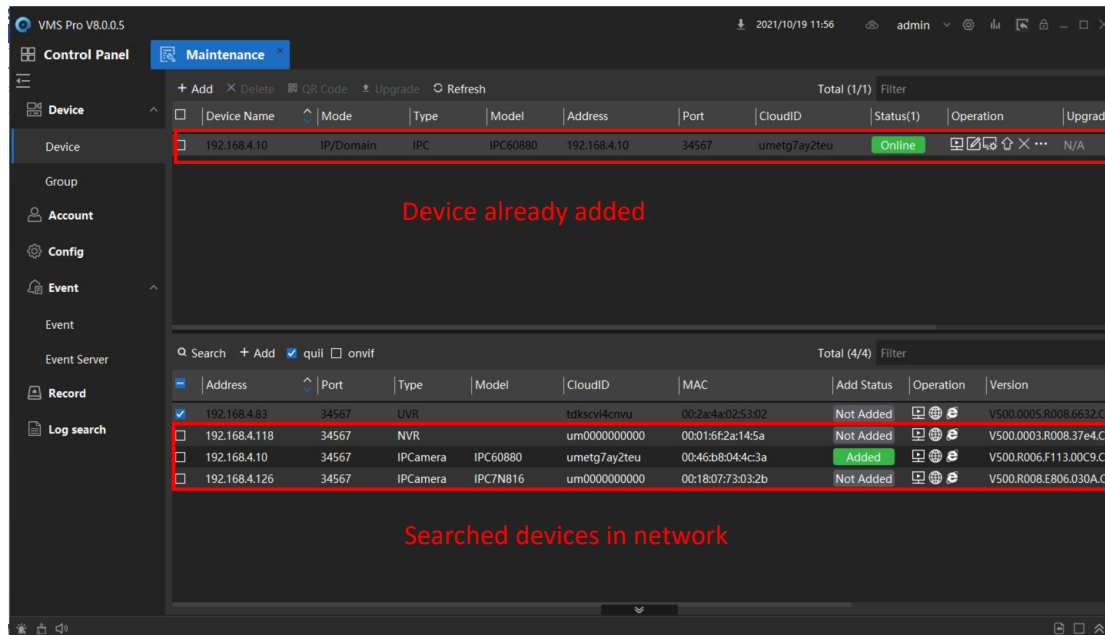

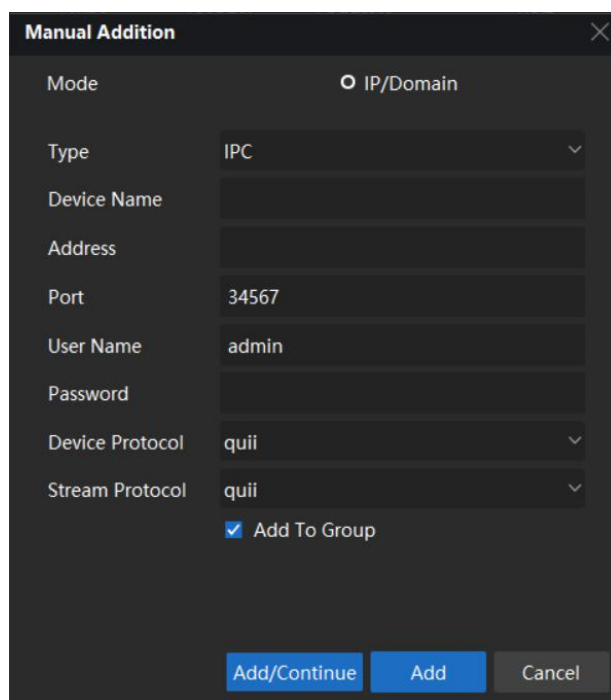


Figure 3-1 Device Manager

### 2.1 Add devices

There are three ways to add devices, manual add, auto search and Cloud.

- **Manual:** Click  and input device information to add a device. Shown as **Figure 2-1**. The information is shown as **Table 2-1**.



The 'Manual Addition' dialog box is shown with the following fields and values:

- Mode:** IP/Domain (selected)
- Type:** IPC (dropdown)
- Device Name:** (empty text field)
- Address:** (empty text field)
- Port:** 34567
- User Name:** admin
- Password:** (empty text field)
- Device Protocol:** quii (dropdown)
- Stream Protocol:** quii (dropdown)
- Add To Group:** ☒

Buttons at the bottom: Add/Continue, Add, Cancel.

Figure 2-1 Manual addition

Items	Items Description
Type	IPC/NVR/UVR/Recorder/EventSVR
Device Name	Alias in device list.
Address	IP address.
Port Number	Default 34567, the same as device media port.
User Name and password	Default username is admin and password is admin.
Device Protocol	Support QUVII and Onvif.
Stream Protocol	Support QUVII.

Table 2-1 Device parameters

If the devices are added, you can have some operations about these devices. Shown as **Table 2-2**.






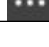
Operations	Description
	Preview video channel.
	Edit the device information, include name/address/port/user name/password
	View and modify the device's configuration.
	Upgrade the firmware of the selected devices.
	Delete the selected devices.
	Include three menus, Modify IP/Web Browser/Status.

Table 2-2 Device operations

- **Auto:** Search all the devices in your network, then click  to add the devices based on



your need. Shown as **Figure 2-2**. If the devices are added, the Add Status will be changed to Added. You can also have some operations about these devices. Shown as **Table 2-3**.

**Figure 2-2 Auto addition**

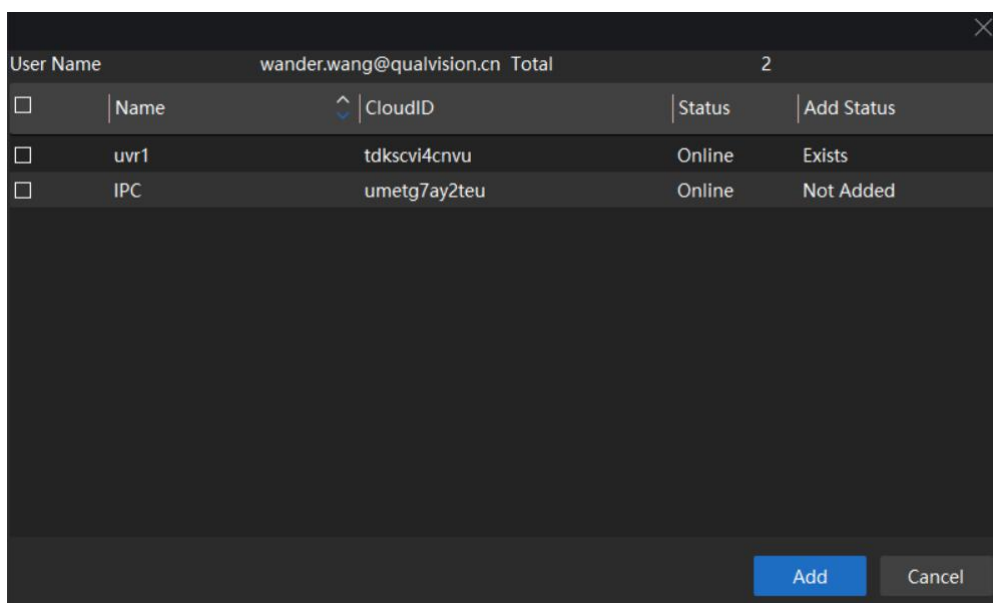
Operations	Description
	Preview video channel.
	Change device IP address
	Access device by web browser.

**Table 2-3 Device operations**

- **Cloud:** Click which is next to the user name on the status bar.

 admin Click add button, input the username and password of your cloud account. Then click  to show your device list, you can add the devices you want. Shown as **Figure 2-3**, **Figure 2-4**.

**Figure 2-3 Cloud addition**



<input type="checkbox"/>	Name	CloudID	Status	Add Status
<input type="checkbox"/>	uvr1	tdkscvi4cnvu	Online	Exists
<input type="checkbox"/>	IPC	umetg7ay2teu	Online	Not Added


Figure 2-4 Device list

**Note:**

- Auto search can search devices in the different network.
- If you add devices using cloud account, you must enable the cloud account after every VMS login. Otherwise the status of the devices will be offline.

## Chapter 3 Preview

### 3.1 Interface

After adding the devices, click  to enter preview interface, shown as **Figure 3-1**.

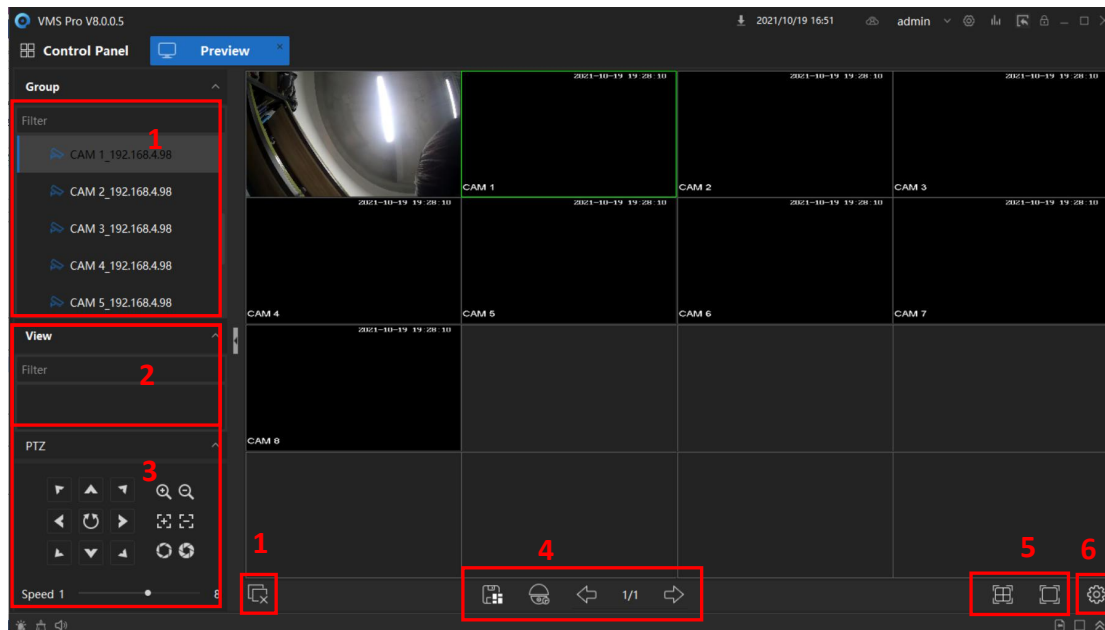


Figure 3-1 Main View

No.	Items	Description
1	Device list	Show all the added devices. Open the selected device channels, choose stream type, RemoteConfig setting and close all channels.
2	View	View list management. It can open the preview windows that saved previously.
3	PTZ	PTZ direct control, Zoom in/out, Focus +/-, Iris+/-, Preset, Auto tour and other PTZ functions.
4	Monitor Project Page up/ Page down Save view	Start/Stop monitor project and task. Page up/ Page down when the channels cannot display in one page.
5	Windows division	Support 1/4/5/6/8/9/13/16/20/25/36/64/128 windows division, and full screen view.
6	Set	Video and snapshot setting.

Table 3-1 Preview description

## 3.2 Device group

All the searched devices are listed in the Group view, shown in **Figure 3-2**

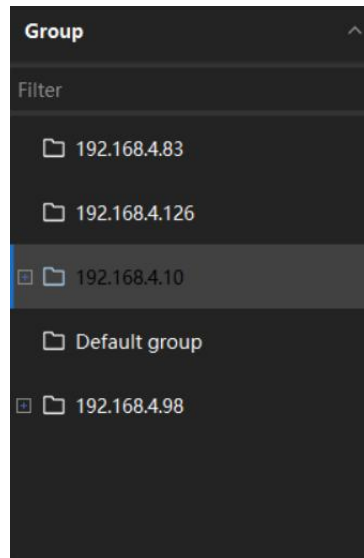
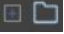



Figure 3-2 device list

Shown as  means that the connection is successfully. Shown as  means disconnection.

When the device connects successfully, click  to show the menus as **Figure 3-3**. You can choose the stream type to open the channel.

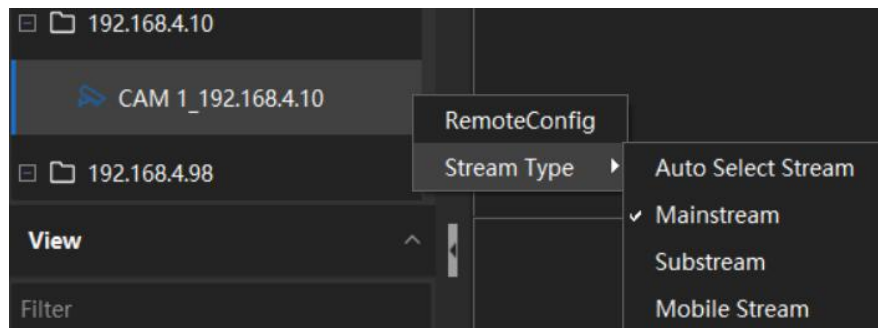
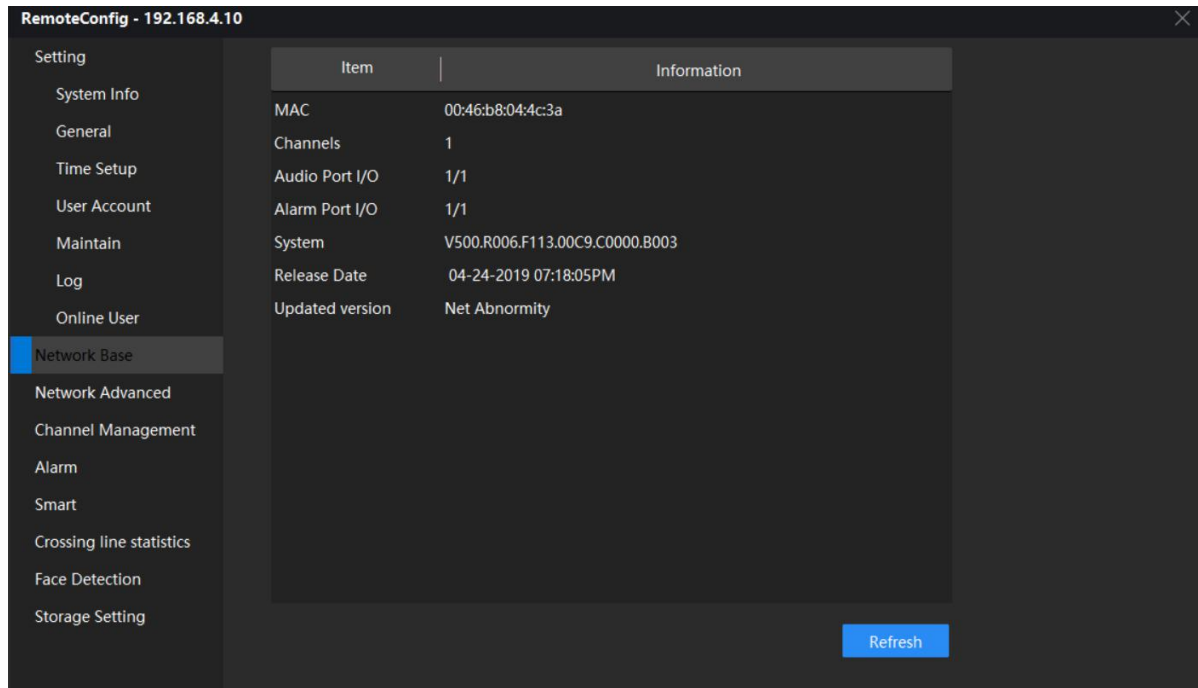


Figure 3-3 Menu

Click RemoteConfig to enter remote configuration interface, you can modify the configurations of device, shown as **Figure 3-4**. For more detail information please refer to NVR operation manual.




**Figure 3-4 RemoteConfig menu**

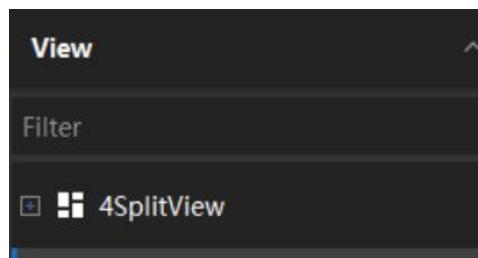
## Notes:

- Double click on a channel will enter 1 division, only view the channel selected.
- When view in multi divisions, some of the channel may not be displayed due to the PC performance and stream encode setting.

## 3.3 View

View List Management function is to save the preview split with a name, so that user can open their previously saved channels only by clicking the saved item in the list. When user want to save preferred view, click the icon  and set the name of View, it would be saved in the View list.

AS shown in **Figure 4-6**.




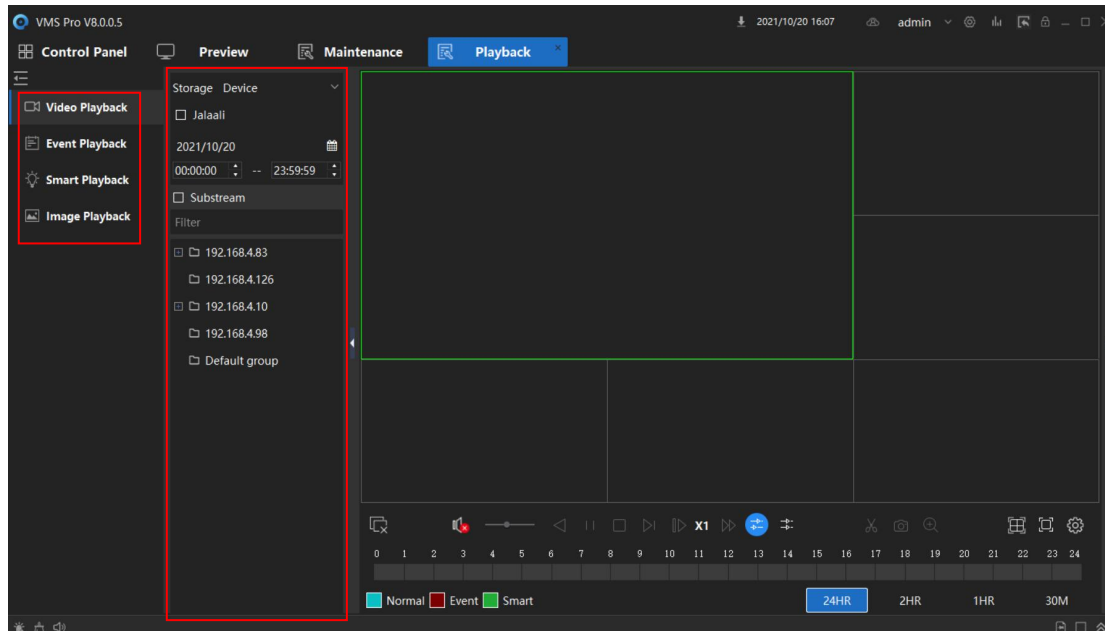
**Figure 4-6 View list**

## Chapter 4 Playback

Playback as an important function in CCTV system. It can help us to check history record in anytime. The VMS of Qualvision has already integrated it into the customer management system, and it can support records search base on channels, device records and local records playback. Download records into the local host hard-disk and others playback control operations. It's simple and easy to use.

### 4.1 Playback

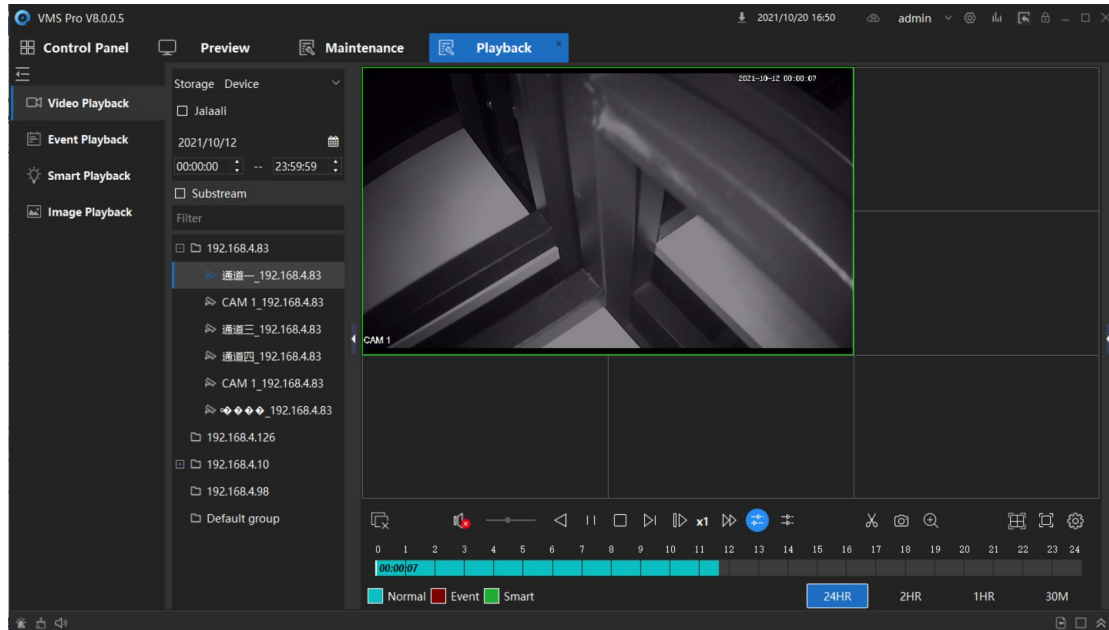
Click  to enter the main playback interface. Shown as **Figure 5.1**.



**Figure 5.1 Playback interface**

Follow the steps below to see the playback. Shown as **Figure 5.2**.

1. Select the playback type. Choose one from video playback, event playback, smart playback and image playback.
2. Select storage type. "Device" means records are in device storage memory, "Storage server" are in local host storage memory.
3. Select the date and time which you want to playback.
4. Double click the device or channel which you want to playback. Or select the device or channel, click "Search" button to search records. Then play the records.




**Figure 5.3 Device Record Playback**

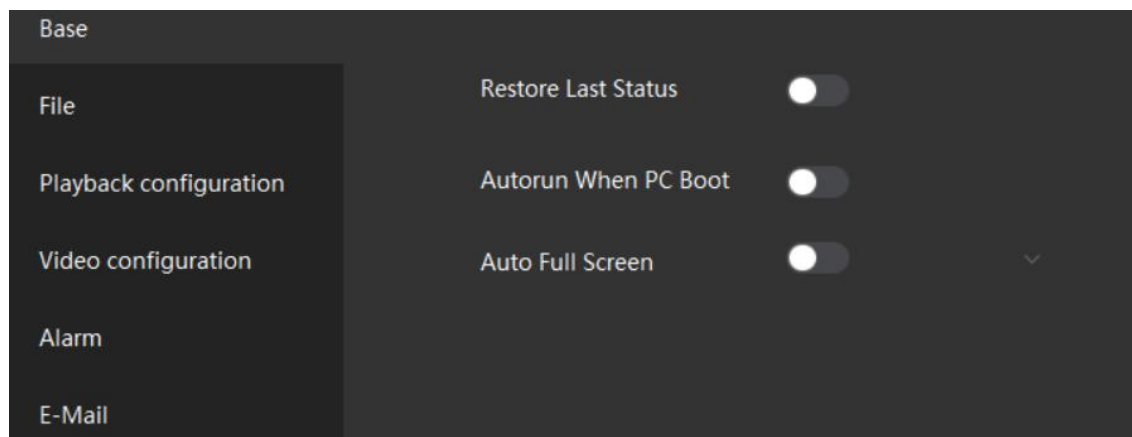
## Notes:

- Synchronous cannot support more than 4 channels.
- VMS maximum supports 9 channels playback at the same time. Playback performance is also related to the local host computer performance.

## Chapter 5 Configuration

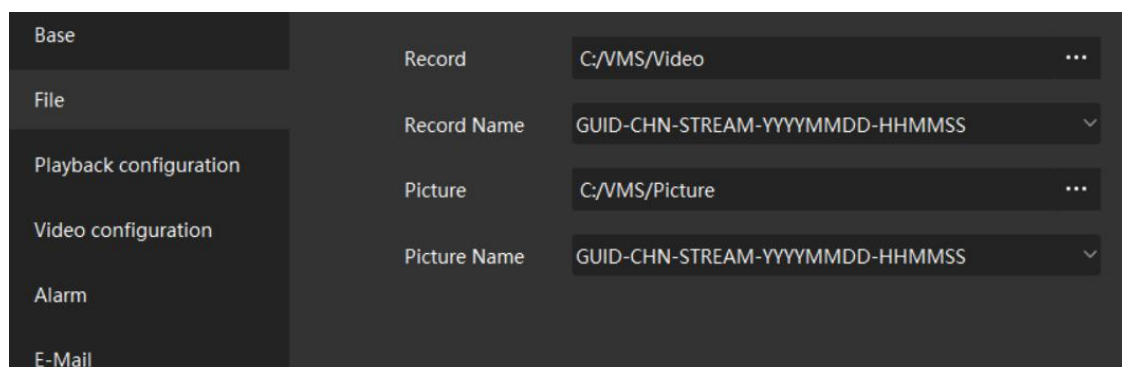
### 5.1 Configuration

Click  icon to enter configuration interface. In this interface you can modify the base configurations of VMS, record and picture save paths, playback and video configurations, and add alarm audio, set E-mail configuration. Shown as **Figure 5-1**, **Figure 5-2**, and **Figure 5-3**.



**Figure 5-1 Base Configuration**

- **Restore Last Status:** The VMS will remember the current state when exit, it will recover when next time launch.
- **Autorun When PC Boot:** Auto launch when PC start.
- **Auto Full Screen:** VMS starts with Preview full screen next time.



**Figure 5-2 File Configuration**

- **Record:** Set the path of local record and download.
- **Record Name:** Save file name rules, cannot be changed.
- **Picture:** Set the path of local snapshot and download.
- **Picture Name:** Save file name rules, cannot be changed.

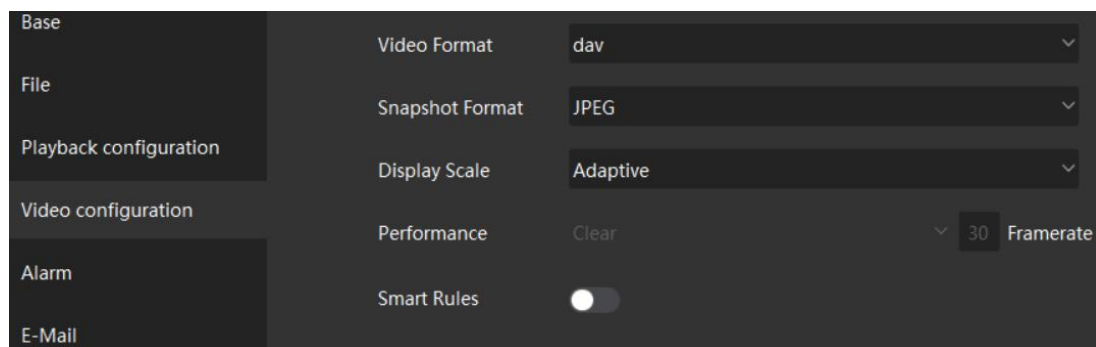


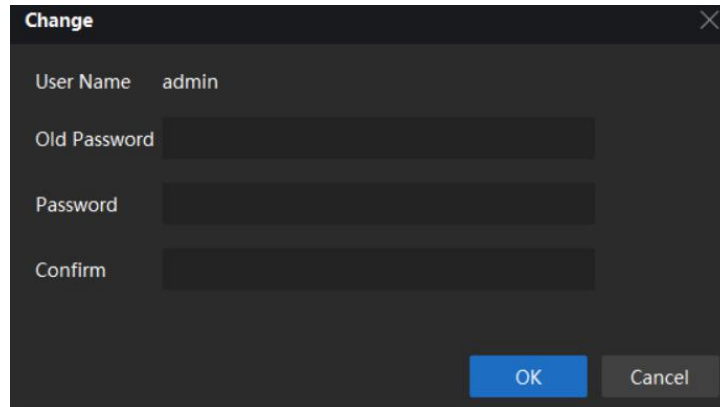


Figure 5-3 Video Configuration

- **Video Format:** Set the videos format. Support MP4/dav/avi.
- **Snapshot Format:** Set the snapshots format. Support JPEG/BMP.
- **Display Scale:** Support Adaptive/16:9/4:3/1:1.


## Chapter 6 Account management

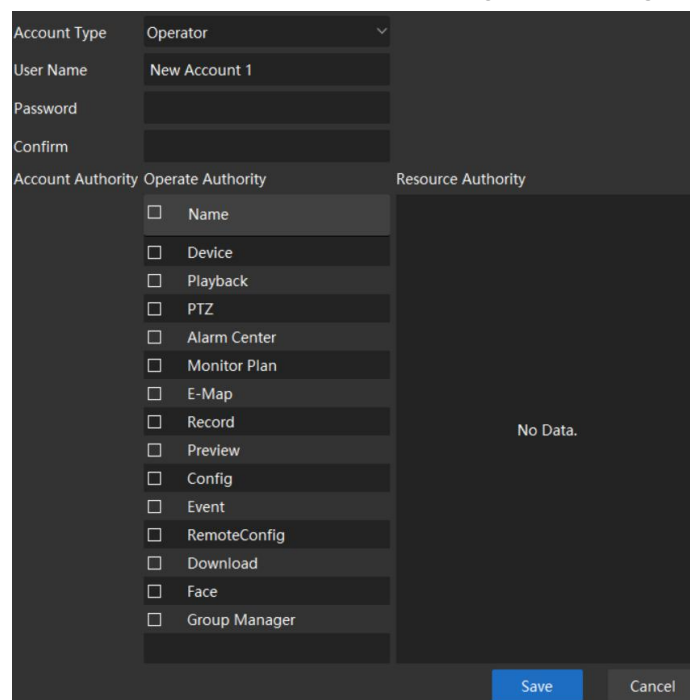
Click  to enter Maintenance interface, then click  to enter Account interface. There is a default account named "admin". You can modify its password. Shown as **Figure 9-1**.



The dialog box titled "Change" has a close button (X) in the top right corner. It contains four input fields: "User Name" with the value "admin", "Old Password", "Password", and "Confirm". At the bottom right, there are two buttons: "OK" (blue) and "Cancel" (gray).

**Figure 9-1 Change password**


You can click  to add a new account. Select account type and account authorities, input user name and password, then click "Save" button to finish adding. Shown as **Figure 9-2**.



The dialog box for adding a new account contains the following fields and controls:

- Account Type:** A dropdown menu currently showing "Operator".
- User Name:** A text field containing "New Account 1".
- Password:** A text field.
- Confirm:** A text field.
- Account Authority:** A section with two columns:
  - Operate Authority:** A list of checkboxes for "Name", "Device", "Playback", "PTZ", "Alarm Center", "Monitor Plan", "E-Map", "Record", "Preview", "Config", "Event", "RemoteConfig", "Download", "Face", and "Group Manager".
  - Resource Authority:** A large area currently displaying "No Data."
- Buttons:** "Save" (blue) and "Cancel" (gray) at the bottom right.

**Figure 9-2 Add account**

After adding, click on the account, you can modify the user name, password and account authorities. You can click  to delete the account.

**Note:**

- *Default account “admin” cannot be deleted or change its authorities.*