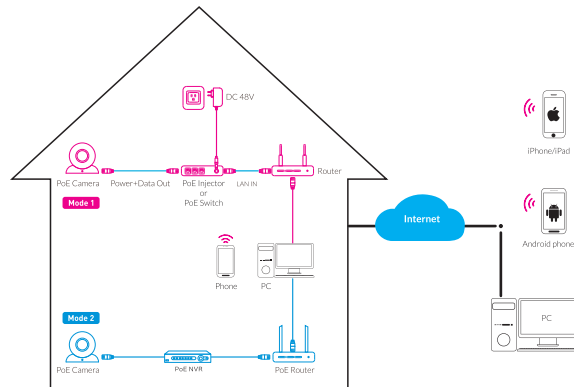




# Quick Start Guide

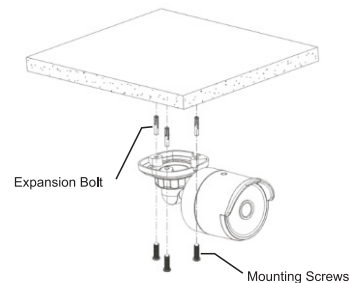
## IP Camera



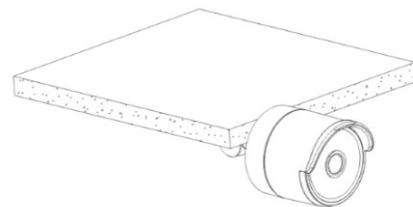
⚠ Attention: There are two connection modes:  
1. For non-PoE router, pls connect the camera by a PoE switch or a PoE injector.  
2. For a POE NVR, pls connect the camera directly to the POE NVR, then follow the below steps.

## Bullet Camera Installation

### 1. Ceiling Mounting



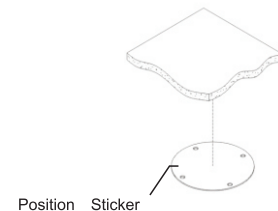
Insert three expansion bolts in place into the ceiling and fix the equipment with three mounting screws.



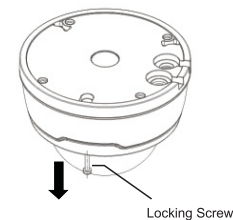
Completion of Installation

## Vandal-Proof Dome Camera Installation

### 1. Ceiling Mounting

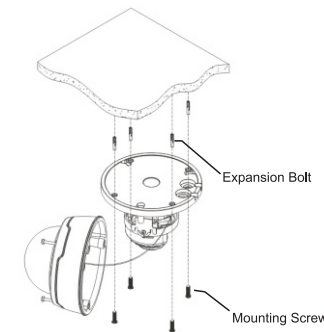


2. Apply the position sticker to the desired camera mounting position.

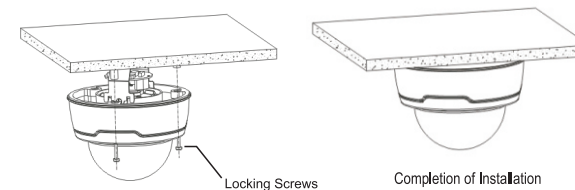


## Cover Component

1. Remove the cover component by loosening the three locking screws with the included hex wrench.



2. Use the position indicated on the position sticker to drill the holes needed to mount the camera base. Insert the expansion bolt into the holes. Match the base's mount openings to the expansion bolts position, then place the mounting screws through the base's mount opening into the expansion bolt. Tighten the mounting screws to ensure the camera base mounted securely.



- ※ Place the cover component back onto the base.
- ※ Please make sure the locking screw position on the cover component matches the locking post on the base.
- ※ Tighten the locking screws after the cover component is in the correct position.

## Add Camera to the App

There are two methods to install the App

- Search for "GWCAMVIEW" in App Store or Google Play

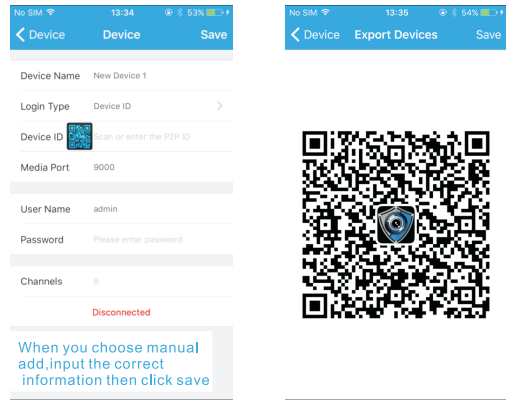
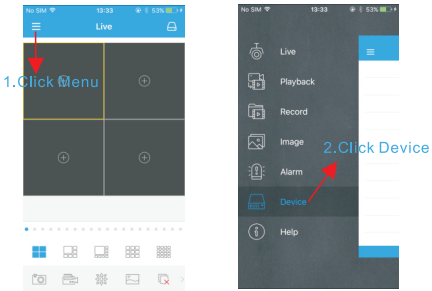


- Scan the QR code below to download the App.



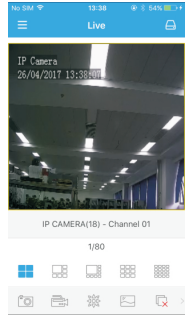
#### 4 Change Camera Settings

1. Open "GWCAMVIEW"; you will see the following interface

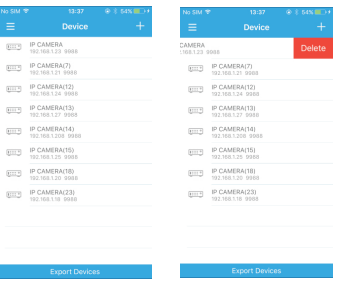


※ Please refer to "Help" section for detailed instruction.

2.If add the device successfully,you will see the following interface

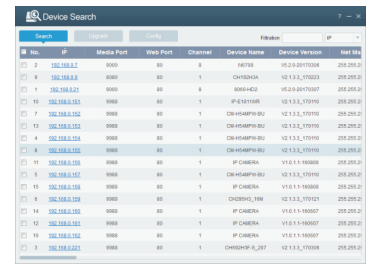


3. Delete a Device  
Under "Device", slide the selected device to the left and click "Delete"

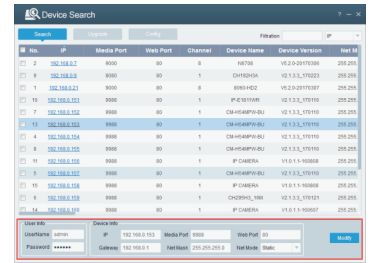


#### 5 In Windows

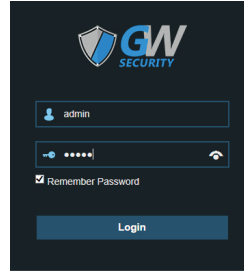
1. Find and open "Device Config Tool" in the CD. It will search all the available devices on your local network.



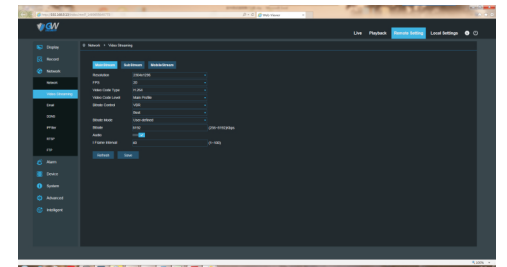
2.Under "Device Config Tool", you can modify the information of a selected device. Including IP, Media Port, Web Port, Gateway, Net Mask, Net Mode. (The default username & password is: admin & admin)



3.Open the Internet Explorer and input the device's IP address;  
Input the username & password in the following interface to login the device.

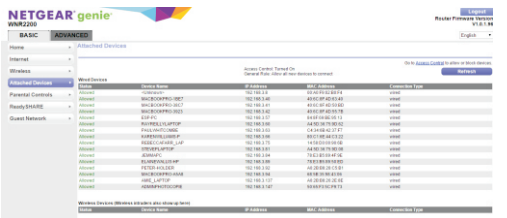


4.After login,click "Remote Setting" to change the setting.



#### 6 In MACOS

1. Open your router web interface and login.  
2. Find the "Attached device" or "Connected device" menu.  
Find the device's IP address according to it's MAC address.  
The Mac address is labeled on the device.



Picture for reference only

3.Input the device's IP address in Safari, login with your username & password.  
4. After "Login", click "Remote Setting" to modify the settings.



Welcome to GW Security Inc.

Official Website: [www.gwsecurityusa.com](http://www.gwsecurityusa.com)  
Email: [support@gwsecurityusa.com](mailto:support@gwsecurityusa.com)  
Business Hour: Monday-Friday from 9:00am-5:30pm PST  
Tel: 626-350-0555