



**3MP IP License Plate Capture Camera  
Operation Guiding**

# Content

1 Overview.....	3
1.1 Product Introduction.....	3
2 Product Structure.....	3
2.1 Product Dimension.....	3
2.2 Product Cables.....	3
3 Product Installation.....	4
3.1 Installation method.....	4
4 Product Settings & Adjustments.....	5
4.1 Log in Web Page:.....	5
4.2 Zoom & Focus Adjustment.....	6
4.3 Image color Parameters Adjustment.....	6
4.4 Image & other Parameters Adjustment.....	7
5 Common Problems.....	9

# 1 Overview

## 1.1 Product Introduction

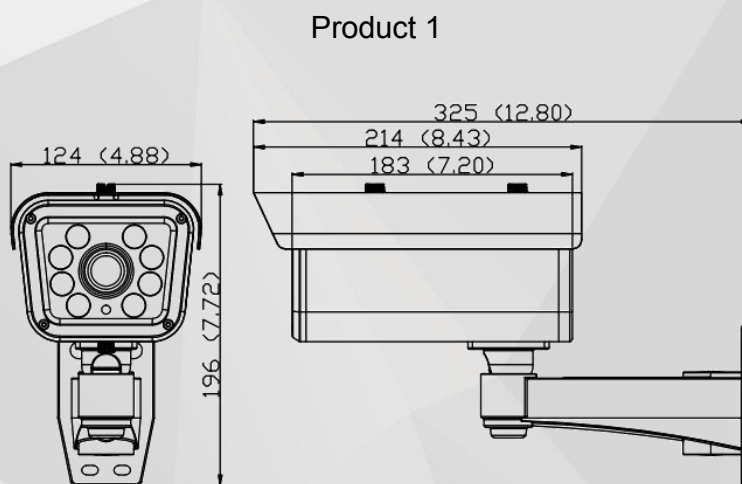
- ◆ This product is called network license plate capture camera
- ◆ Customers can use NVR,VMS or Web to do capturing on plate number.

## 1.2 Product features

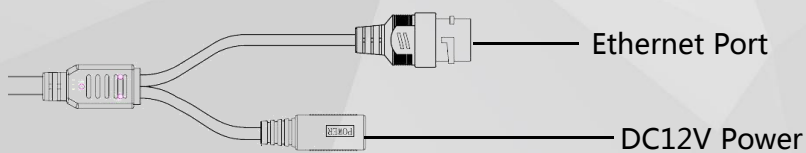
- ◆ Capture speed reach up to 90km/h
- ◆ Frame rate maximum 60fps/s
- ◆ Picture resolution maximum 3MP

# 2 Product Structure

## 2.1 Product Dimension



## 2.2 Product Cables

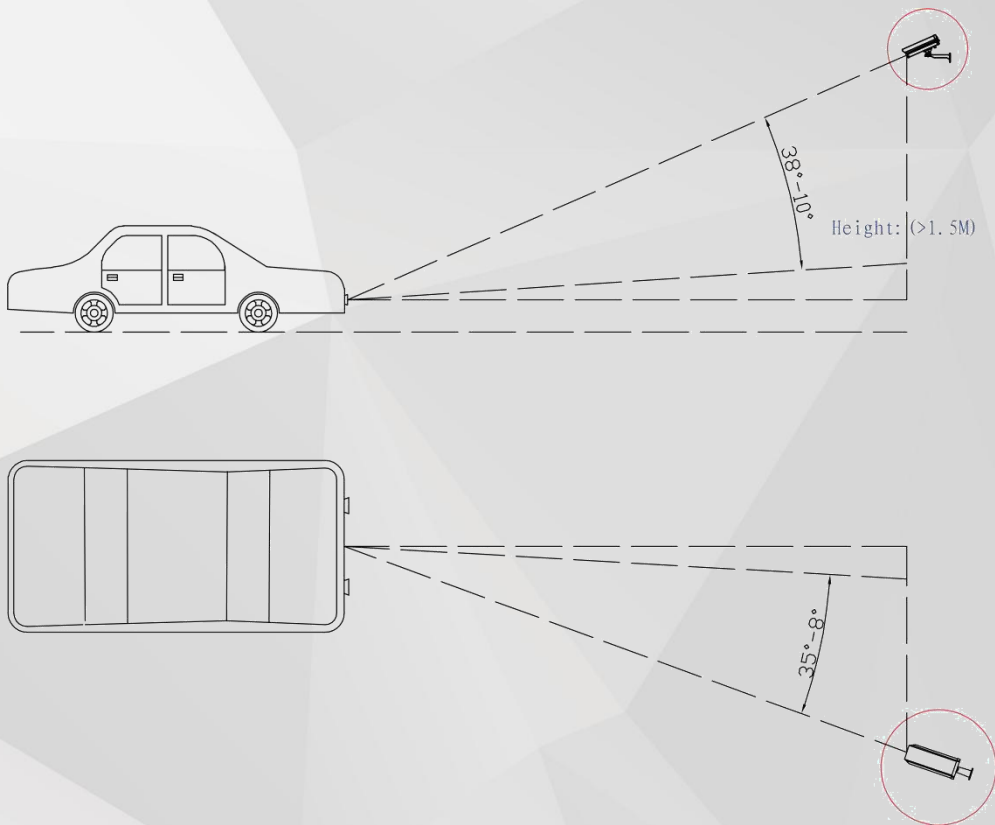


## 3 Product Installation

### 3.1 Installation method

- Recommended installation height: ~1.5M (5') above ground;
- Recommended Vertical angle between camera lens and plate number: 38° ~ 10°;
- Recommended Horizontal angle between camera lens and plate number: 35° - 8°.  
Best installation angle is 15°-35°
- The best plate capture distance is 2M(6.5') ~ 15M(49')

Shown as pictures below:

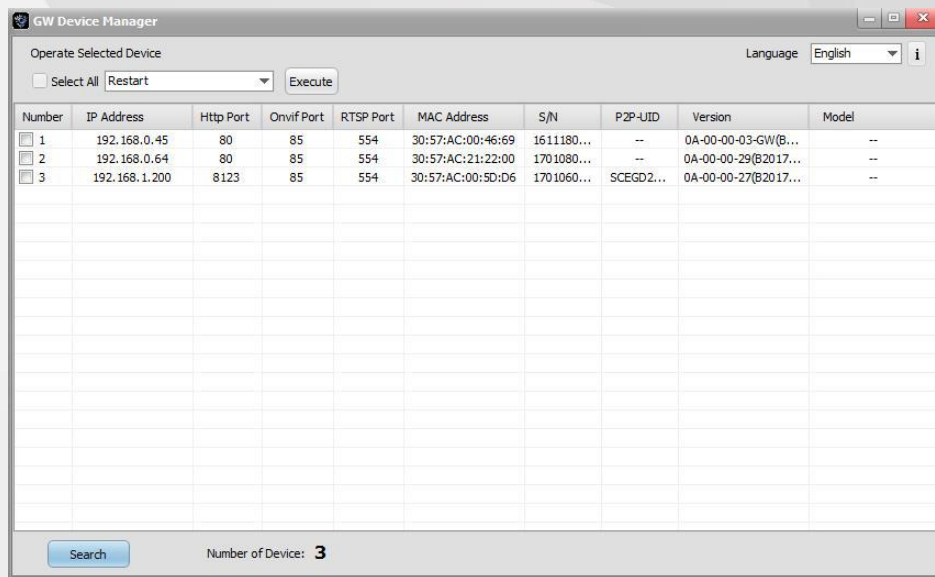


Warning: If the installing height is more than 1.5M (5'), please make sure the vertical angle between camera lens and plate number is no more than 38°.

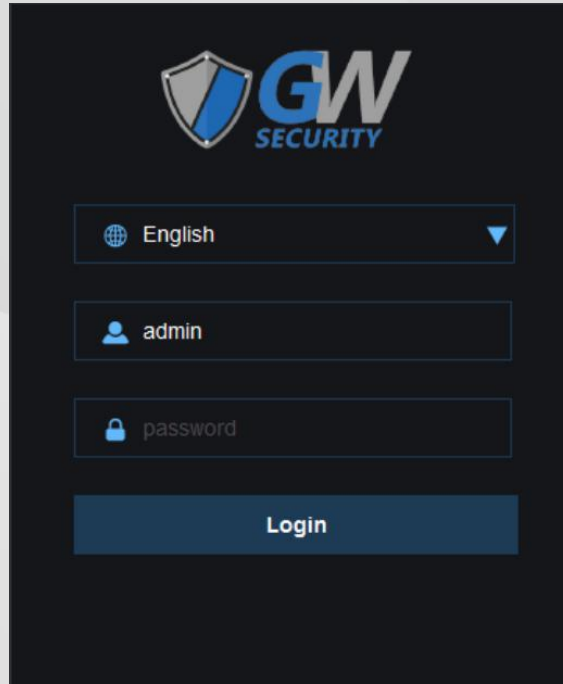
## 4 Product Settings & Adjustments

### 4.1 How to Log into the Web Interface:

**Step 1 Use** “GW Device Manager” to find the camera on the network. (The software is located in the CD included in the package). After successfully install and execute the software, you will see the interface like the picture shown below. Click the “Search” button to initiate the search. If the camera found has a different IP scheme than your network, right click on the item found and choose “network configuration” to modify the IP address.

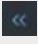






**Step 2 Open** Internet Explorer (Prior to IE11, please use 32 bit IE. On Windows 10, please find Internet Explorer in the following directory: C:\Program Files (x86)\Internet Explorer). In the address bar, please enter the IP camera’s current IP address (if the web port had been modified, please enter the IP in the format of http://IP:port). When prompted with the login screen shown below, please enter the username (admin) and password (admin). Click on the “Login” icon to log into the web interface. Click on the ActiveX link shown in the preview pane to download and install the required plug-in.



Note: IPC address must be same network segment as your PC. If they are in a different network segment, please use “Device Manager” to modify the address of IPC.

## 4.2 Zoom & Focus Adjustment

**Step 1 Click**  in the “Preview” page;

**Step 2 Click**  or  next to ZOOM to the targeted place, then click  or  next to FOCUS until the image is clear.



## 4.3 Image color Parameters Adjustment

**Step 1 — Click** “Settings——Config Media——Image” page and you will see below:



Detailed parameter descriptions :

Items	Explanation
Hue	Default value 50, 0-100 optional; adjust the video color. Higher value results in reddish picture. Lowering the value results in greenish picture.
Brightness	Default value 28, 0-100 optional; adjust the overall video brightness
Contrast	Default value 25, 0-100 optional; adjust the overall lightness and darkness of the image.
Saturation	Default value 50, 0-100 optional; adjust the fullness of color in the overall picture. A value of 0 results in black and white picture.
Sharpness	Default value 50, 0-100 optional; adjust the overall sharpness of the picture. If value is too high, the overall picture noise will increase.

#### 4.4 Image & other Parameters Adjustment

**Step 1** — Click “Settings—Config Media—Image” page and you will see below:



Detailed parameter descriptions please see below :

Items	Explanation
3D DNR	Default value Disable; This function will decrease image noise, but may cause motion trailing images.
Dewarping	Default value Disable; Please <b>DO NOT</b> use this function for license plate capture camera.
Exposure Mode	Default value Auto; Setting it to manual mode enable shutter speed adjustment.
BLC Mode	Default value Disable; Enable backlight compensation.
Day/Night	Default value Auto; Adjust when camera enables night vision mode.
Mirror	Default value LEFT; Allows flipping the image horizontally.
Turn	Default value UP; Allows flipping the image vertically.
Camera Angle	Default value Normal; Turn the camera 90°/180°/270°.
LUX	Value 0-9 optional; This function allows you to set CDS illuminance; Higher value leads to LED to be on in relatively brighter environment. 0=Off, 1=0.8Lux, 2=2Lux, 3=3Lux, 4=4Lux, 5=6Lux, 6=100Lux, 7=150Lux, 8=200Lux, 9=On.
LED intensity	Value 0-9 optional; 0=260mA, 1=310mA, 2=330mA, 3=350mA, 4=390mA, 5=430mA, 6=460mA, 7=540mA, 8=630mA, 9=680mA. When camera and plate number distance is 2-5M (6.5' ~ 16.4'), choose 1 or 2; When 6-10M (19.6' ~ 32.8') ,please choose 3 or 4; When 11-15M (36' ~ 49'), please choose 5-7; Value 8 and 9 are used in very dark situations. <b>Best LED intensity value is 4</b>
Shutter	Default value 1/1000, shutter range: 1/25-1/100000;
FLC	Default value Outdoor, change the setting when experiencing flickering image.



## 5 Common Problems

Common Problems	Solutions
<p>Cannot find camera on the network.</p>	<p>Possible Reasons :</p> <ul style="list-style-type: none"> <li>◆ Camera is not receiving power</li> <li>◆ Incorrect power supply; voltage/ampereage</li> <li>◆ Faulty network cable</li> <li>◆ Camera is in different physical network</li> </ul> <p>Solutions :</p> <ol style="list-style-type: none"> <li>1. Power up camera using correct power supply (DC 12V 2A);</li> <li>2. Change network cables. Make sure camera and the PC or NVR is in the same local area network.</li> </ol>
<p>Can not install ActiveX</p>	<p>Possible Reasons :</p> <ul style="list-style-type: none"> <li>◆ PC system is 64-bit</li> <li>◆ PC system VC is not installed</li> <li>◆ Web browser does not support</li> <li>◆ Web browser stop ActiveX installation</li> <li>◆ Anti-virus blocking installation</li> </ul> <p>Solutions :</p> <ol style="list-style-type: none"> <li>1. When PC system is 64-bit,please choose 32-bit IE or upgrade IE to IE11</li> <li>2. install vcredist_x86</li> <li>3. Currently only support from IE7-11</li> <li>4. Enable “Active X” in IE “internet setting”</li> <li>5. Temporary disable anti-virus software</li> </ol>
<p>Lens not focus</p>	<p>Possible Reasons :</p> <ul style="list-style-type: none"> <li>◆ Zoom too far into the biggest or smallest angle</li> </ul> <p>Solutions :</p> <ol style="list-style-type: none"> <li>1. When zooming lens into biggest or smallest angle, please zoom out a little</li> </ol>
<p>Can not see plate number at daytime</p>	<p>Possible Reasons :</p> <ul style="list-style-type: none"> <li>◆ Contrast and brightness too low</li> <li>◆ Lens not focus</li> </ul> <p>Solutions :</p>

	<ol style="list-style-type: none"> <li>1. Try to make contrast and brightness value as default.</li> <li>2. Adjust lens</li> </ol>
Can not see plate number clearly	<p>Possible Reasons :</p> <ul style="list-style-type: none"> <li>◆ LED off / video too dark/ Overexposed</li> <li>◆ Distance too far (2-15M)</li> </ul> <p>Solutions :</p> <ol style="list-style-type: none"> <li>1. Check LUX value on IE page; Check Led intensity value</li> <li>2. Keep the distance from camera to car plate within 15M (49')</li> </ol>
Video Sluggish	<p>Possible Reasons :</p> <ul style="list-style-type: none"> <li>◆ PC hardware</li> <li>◆ Unstable network</li> </ul> <p>Solutions :</p> <ol style="list-style-type: none"> <li>1. Choose high level hardware PC (At least Intel i5 CPU)</li> <li>2. Change network devices, or lower camera's resolution, stream rate, frame rate</li> </ol>
Network connection not stable	<p>Possible Reasons :</p> <ul style="list-style-type: none"> <li>◆ Poor Ethernet Connection</li> <li>◆ IP address conflict</li> </ul> <p>Solutions :</p> <ol style="list-style-type: none"> <li>1. Change network devices, modify IP address or enable DHCP</li> </ol>