



# **GW IPCManager V4.02.xx (Windows)**

## **User Manual**

**Document Version : V1.02.01**

**Update : 2017.07**

## Abstract :

The document is the user manual for the GW IPCManager V4.02.xx which is used for the IP device (IP Cameras, NVRs etc.) management like searching, quick configurations, firmware upgrading, batch configurations etc.



---

# 1 Software Running Requirements

GW IPCManager Tool supports to run on the Windows Platform, PC Linux Platform including CentOS, Ubuntu and Debian etc., and MAC OS platform. This document is only for Windows platform version introduction.

Windows OS: Windows XP, Windows 7, Windows 8, and Windows 10

Linux OS: CentOS, Ubuntu, Debian etc.

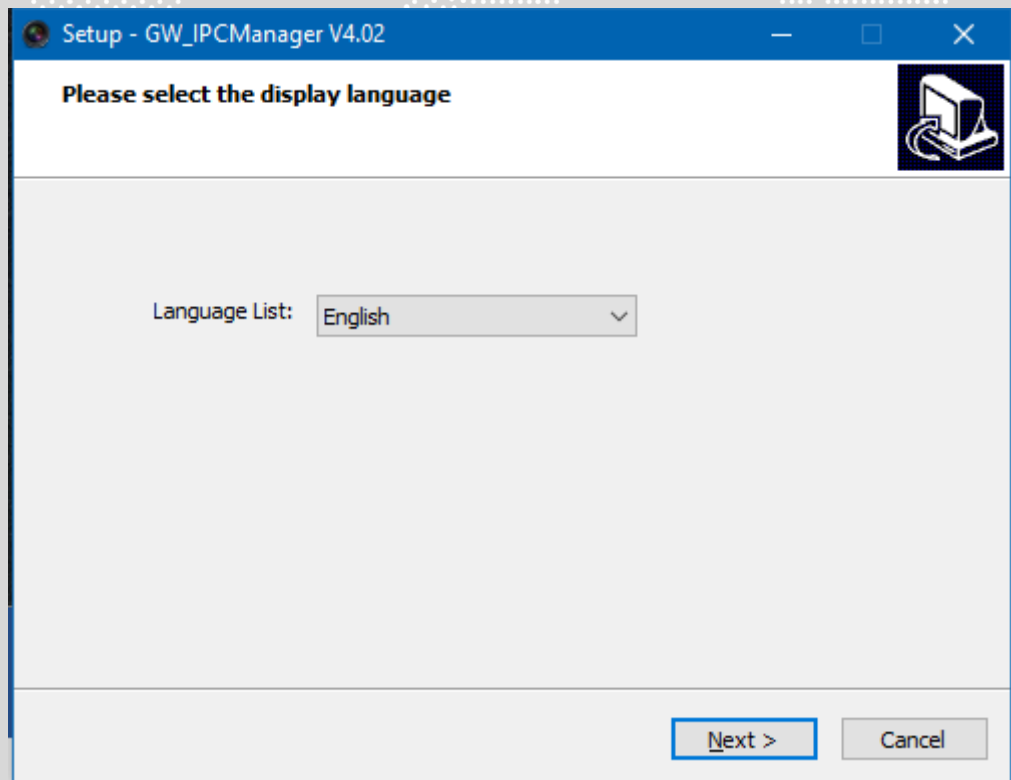
CPU: 1.3GHZ

DDR: 2G

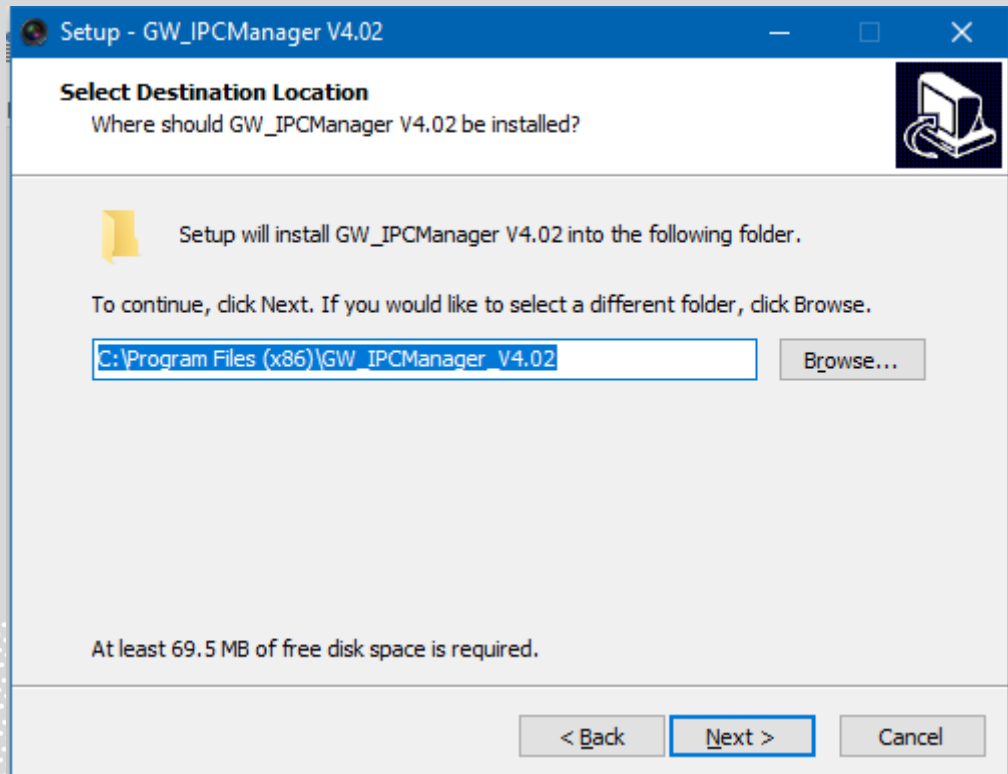
HDD: at least 10G

## 2 Software Installation

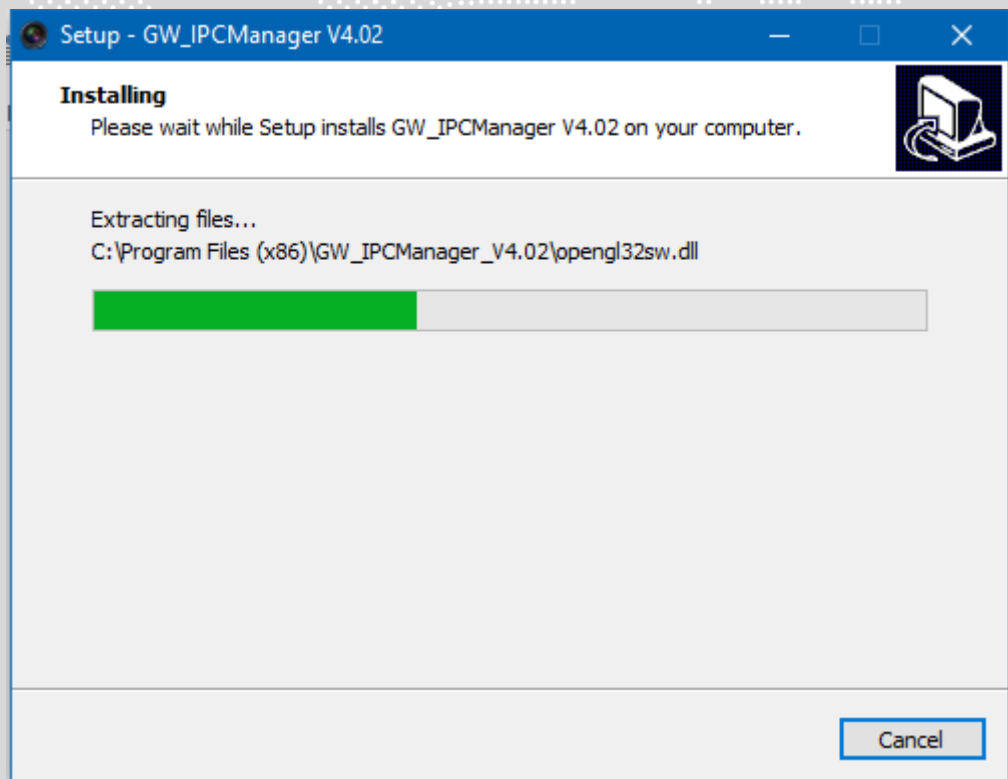
Setup the file “GW\_IPCManager 4.02.xx\_win\_x86.exe” to install the software on your computer like the below steps:



Check the box: Create a desktop shortcut, and click “Next”;

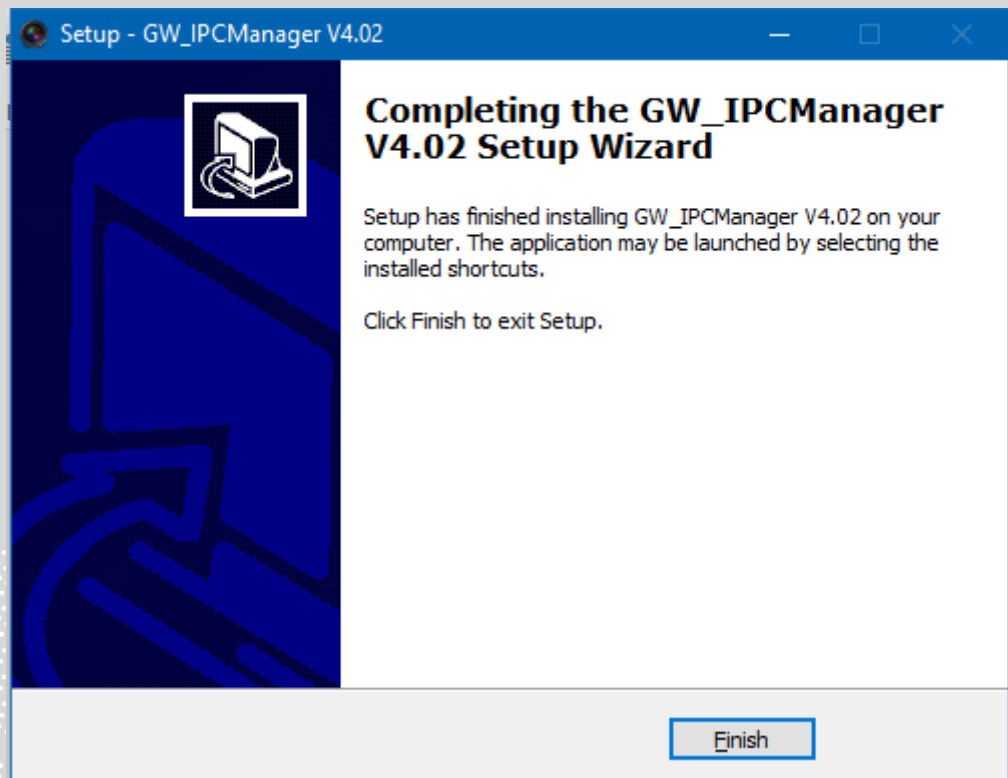


Click “Install” to continue the installation;



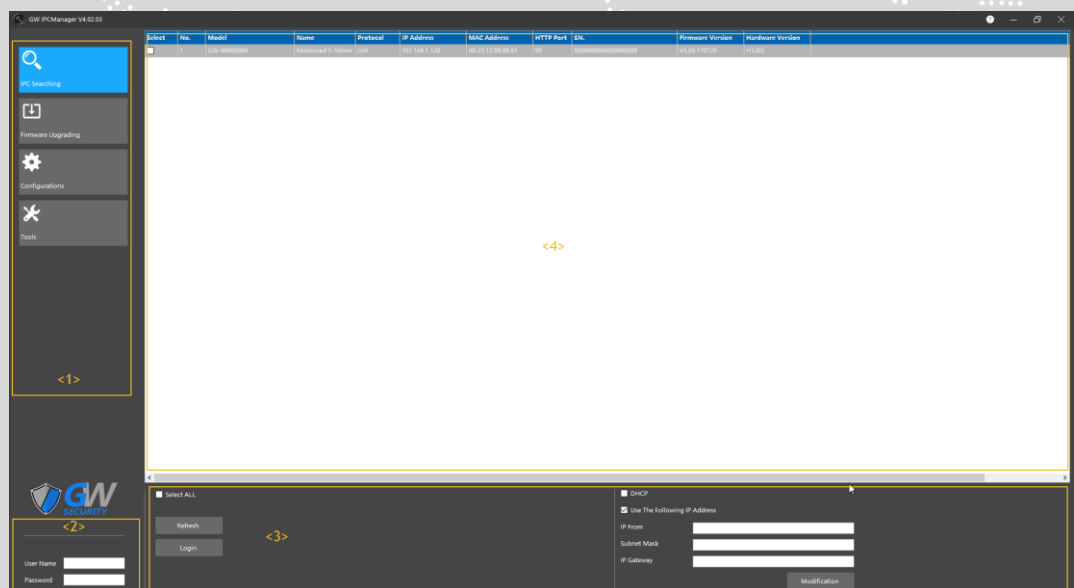
The software will be installed in the default folder "C:\Program Files (x86)\IPCManagerV4.01\...

And click “Finish” to complete the GW IPCManager Setup;



### 3 IPCManager Tool Introduction

Here is the GW IPCManagerV4.02 Main Window introduction when it is started.



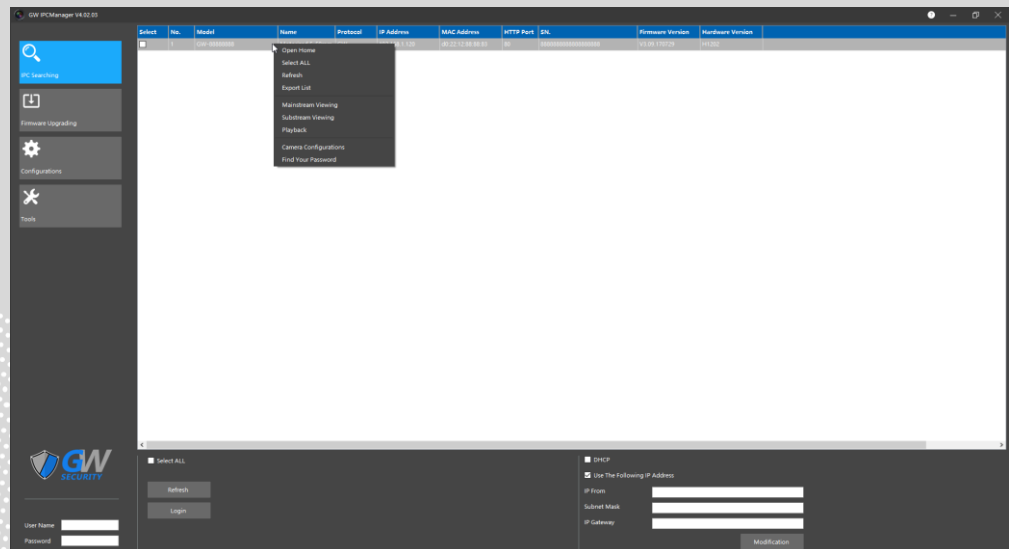
Zone <4>: List of the cameras searched;

If the software has been started, please click “**refresh**” to re-search the cameras like the below:

example, 30 pcs cameras were selected, and the “IP From” is 192.168.3.101, “sub mask” is 255.255.255.0, and the IP Gateway is 192.168.3.1. On this way these 30 pcs cameras will get the IP address 192.168.3.101 to 192.168.3.130 automatically.

- Quick configurations for the camera selected.

Right click on the camera like the below:



**Open URL:** select it to open the camera’s web interface; (Please check the camera’s web interface document for the details.)

**Select ALL:** select all the cameras searched;

**Refresh:** re-search the cameras;

**Export List:** to export the list of the cameras searched with informations: Model, Name, Protocol, IP Address, MAC Address, HTTP Port, SN. Firmware Version and Hardware Version etc.

**Mainstream viewing:** view the main stream video of the camera; There will be window to preview the main stream video, on this way it’s convenient to adjus the verifocal lens of the camera.

**Substream viewing:** view the sub stream video of the camera; It’s convenient to check if the video of the camera’s video is ok or not quickly.

**Playback:** playback the archives which are in the camera’s SD or USB Flash disk remotely; Please check the below for the details.

**Camera Configurations:** configure the camera’s main parameters without open the camera’s web interface; Please check the below for the details.

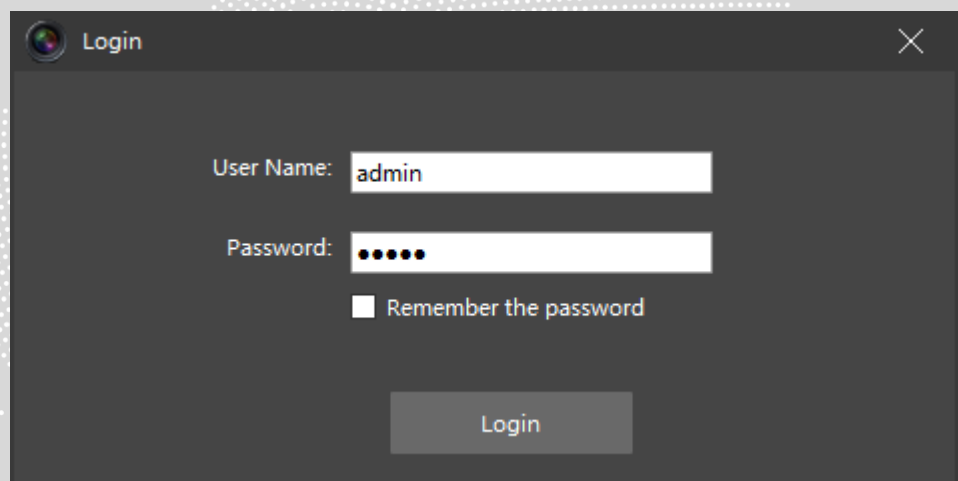
---

**Find the password:** to ask for the camera's password if you forgot the camera's password. Please check the below for the details.

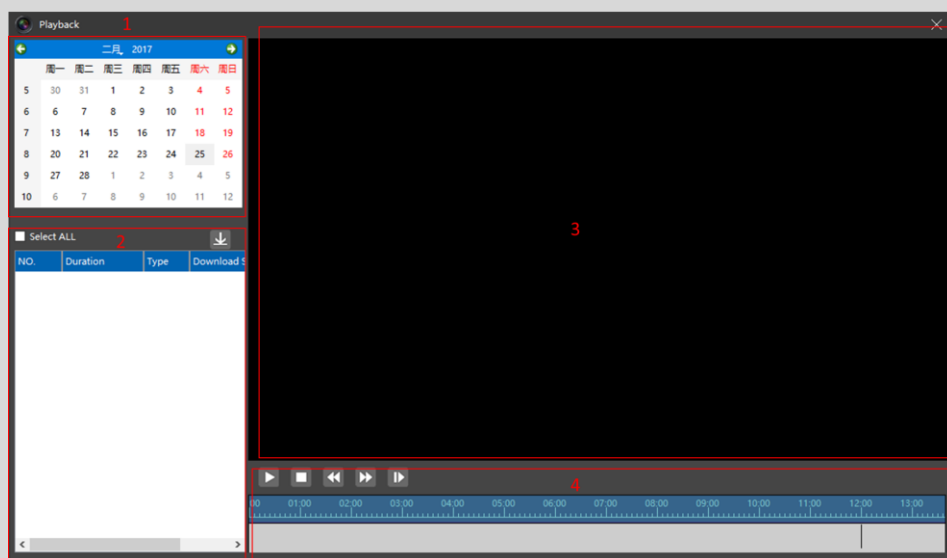
**“Export List” Introduction:** the user can export the cameras searched list which is CSV format, and the export file can be used for the management, or be input to the third part software. On this way the user can easily input the cameras installed in the project into the management system.

Select “Export List”, and then select the destination folder to export the cameras searched list, the file name should be fixed as “Devlist.csv”.

- **“Playback” Introduction:** the user can select “playback archives” to playback the archives (video and audio) which are in the SD card or USB Flash Disk of the camera remotely. It's convenient for the user to check the SD records.
  - 1) Select the camera, and then right click to select “Playback” to play the archives in this camera's SD or USB Flash Disk. (Please be sure there is SD or USB Flash Disk in the camera, otherwise there will be notification later)
  - 2) And then fill out the camera's username and password to log into the camera like the below:

A screenshot of a camera login window. The window has a dark gray background and a title bar with a camera icon and the word 'Login'. There are two input fields: 'User Name:' with the text 'admin' and 'Password:' with six black dots. Below the password field is a checkbox labeled 'Remember the password'. At the bottom center is a 'Login' button.

- 3) Below is the “Playback” Window, there are FOUR sub windows:



W\_1: To select the date of the archives;

W\_2: The list of the archives in the camera, and these archives can be selected to download into the computer through clicking “Download” button after selecting the archives you want to download or check the “Select All” to select all archives.

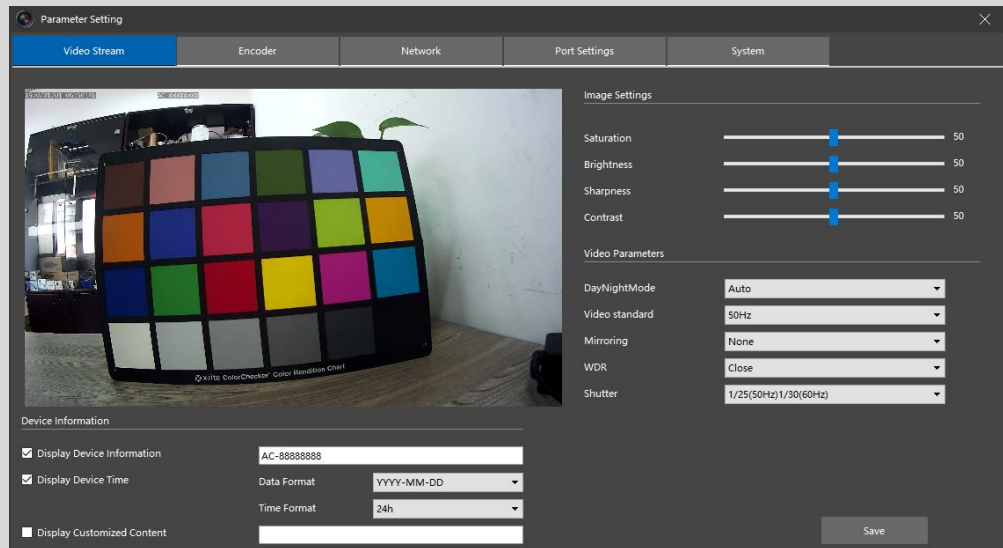
W\_3: Playback Video Window.

W\_3: Playback Control Window, the timeline can be zoom in and zoom out through scrolling the mouse.

There are the buttons to control the playback: **PLAY/STOP/Slow Back/Quick Forward/Play per Frame.**

- **Camera Configurations:** the user can set most parameters of the camera without opening the camera’s web interface and installing the activeX plugin for IE;

For the camera searched, please right click and select the “Camera configurations”, and for the camera which is not searched but can be accessed for example through VPN network, you can click “**Login**”, and fill out the camera’s IP address, port, username and password to start “Camera configurations”.

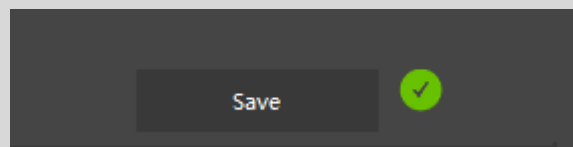


From the camera configuration, most important parameters can be set through IPCManager Tool including: Video stream parameters, encoder parameters, network parameters, port settings and system information etc.

**Video stream:** you can check the video which can be enlarged to the full screen through double click on the video, which is helpful for you to adjust the verifocal lens focus.

- 1) Device information settings which can be shown on the video on time, thus you can check if it's ok or not on time, it includes: Device Name (information), Device Time Format, and Customized Information;
- 2) Image settings: you can adjust the image's parameters manually including image's saturation, brightness, sharpness, contrast etc.
- 3) Video parameters: you can set some usual video parameters including Day and Night mode, Video standard, Mirroring, WDR enable or not, and shutter etc.

The above parameters can be effective on time which there is changes, but please be sure to click "Save" to save the changes.



**Encoder:** you can set the camera's video and audio encoder parameters including: video resolution, encode type, code profile, key frame, FPS (frame rate), VBR and CBR etc. audio encode type. (Please be noted that AAC encode type cannot be set through IPCManager tool, please set it through opening the camera's web interface)

Parameter Setting

Video Stream

Encoder

Network

Port Settings

System

Video Encode

Video

Mainstream

Encode

h264

Profile

Main Profile

Resolution

2592x1520

Key Frame

50

Frame Rate

18

☒ VBR

Quality

4

☐ CBR

bitrate[kbit/s 256-8000]

6000

Audio Codec

☒ Enable

Encode

g711u

Save

## Network Parameters:

Parameter Setting

Video Stream

Encoder

Network

Port Settings

System

TCP/IP Parameters

☐ Obtain an IP address automatically(DHCP)

☒ Use the following IP address

IP Address

192.168.1.112

IP Gateway

192.168.1.1

Subnet Mask

255.255.255.0

DNS

8.8.8.8

Device Time

☐ Synchronize with the PC time

Date

2017/2/6

Time

12:06:35

☐ Sync with NTP Server Time

NTP Server

Port No.

123

Interval[hour]

1

Time zone

GMT+03(Moscow, Riyadh)

Save

## Port Settings:

Parameter Setting

Video Stream | Encoder | Network | **Port Settings** | System

Port Parameters

Http Port	80	[1..65535,Default:80]
RTSP Port	554	[1..65535,Default:554]
TCP Port	6000	[1..65535,Default:6000]
FLASH Port	1935	

Save

**System Information:** here you can check out the SD or USB Disk information, and format them. On system management, the camera can be restored or reset to the factory settings.

Parameter Setting

Video Stream | Encoder | Network | Port Settings | **System**

System Information

MAC Address	d0:22:12:d1:c4:27
SN	G3200WM0FZ8200002
Model Name	BV-G3200W
Hardware Version	H0203
Firmware Version	V2.29.170223

Storage Information

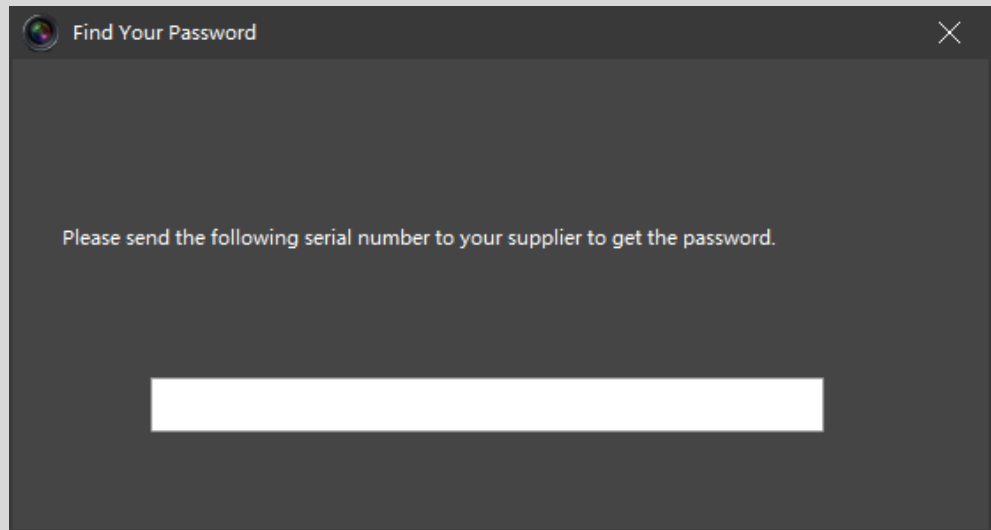
Size:	7855
Surplus Capacity:	1022
Status:	Normal

Format Refresh

System Management

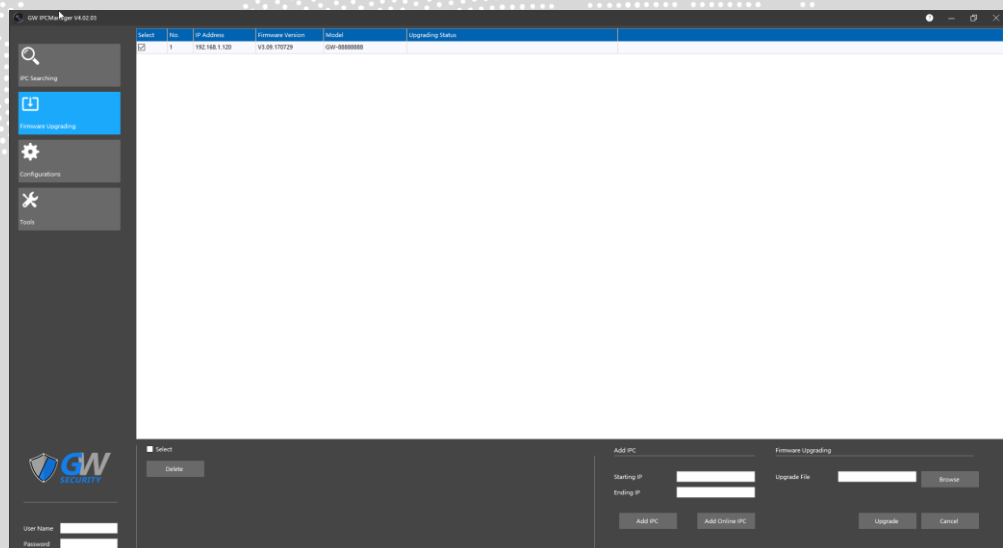
Restore	All parameters will be restored to the factory configurations.
Reboot	The device will be rebooted.

- Find the password: if you revised the camera's password before and forgot it, thus you cannot access to the camera. On this you can use the tool to get the password from your sales. Just copy the serial security code to your sales, and then you will get your password.



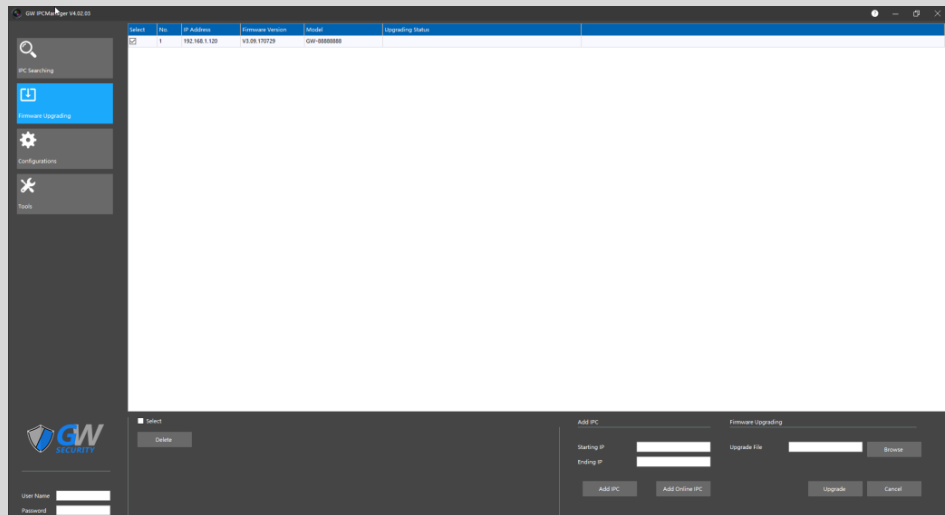
## 3.2 Firmware Upgrade

The cameras can be updated with the new firmware in batch here like the below description.



- After you searched the cameras, and come to this page, then there will be two options to add the cameras which is needed to be upgraded.

1) Click “Add online IPC” to add all the searched cameras like below:

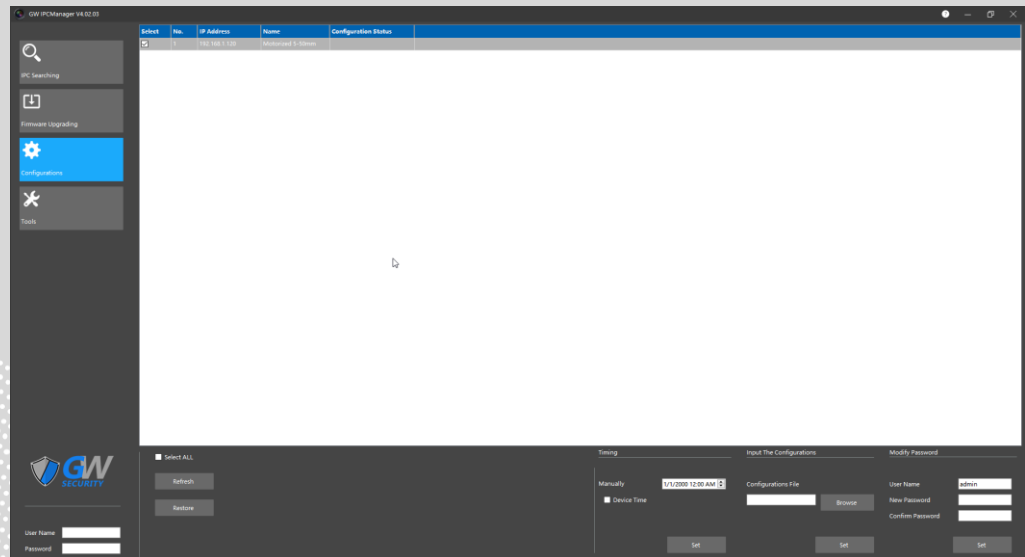


- 2) Fill out the “Starting IP” and “Ending IP” to add the camera manually like the below:

- You can check the box of “Select All” to select all the cameras to delete them or upgrade them, or check the box one by one to delete them or upgrade them.
- After confirm all the cameras you selected can be upgraded at one time (it means these cameras can used the same firmware, otherwise you have not to upgrade them at the same time.), please click “Browse” to select the firmware which should be upgraded like the below, and then click “upgrade” or “cancel” to upgrade them or cancel this operation.

## 3.3 Configurations

The user can set some configuration for the cameras in batch here including time settings, restore all the cameras, modify the cameras' password, and output and input the cameras' configurations in batch.



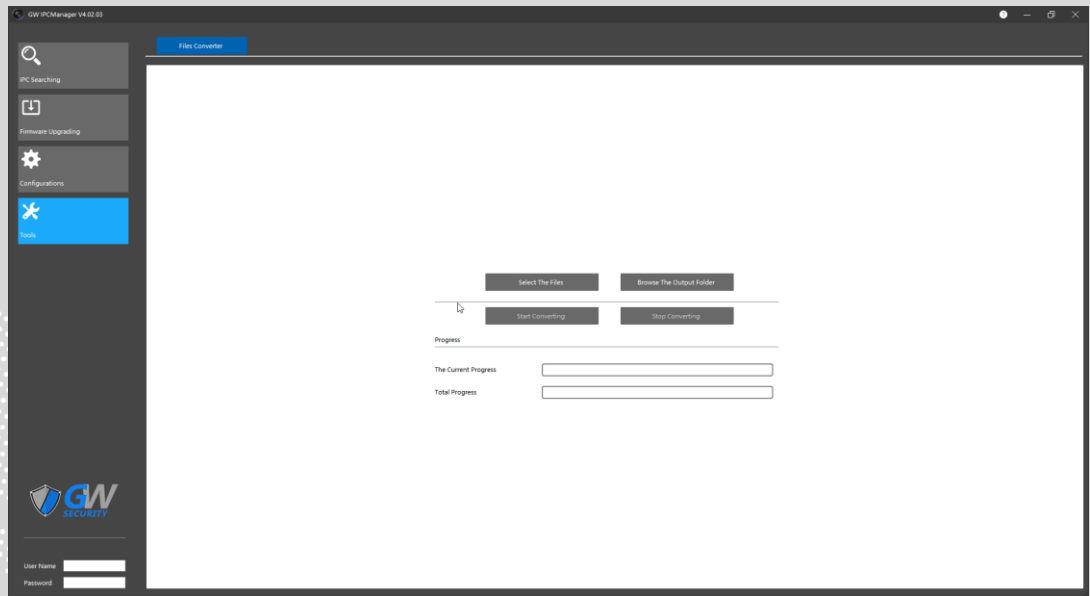
- After you searched the cameras, you can click “**Refresh**” to add the cameras here automatically.
- You can check the box of “Select All” to select all the cameras, or just to select the cameras which are needed to set.
- You can click “**Restore**” button to restore all of the cameras to the factory configurations in batch including IP, user information, parameters etc.
- **Change the time (manual)**, and set all of the cameras' time to be the same, or set the cameras to be synchronized with the PC time, then click “OK” to save the changes.
- **Modify the specified user's password:** fill out the user name whose password needs to be changed in batch, and then fill out the new password, click “Set” to change the specified user's password in batch.
- **Output and Input the camera's configurations:**

The user can export one of the camera's configuration, and copy its configurations into other cameras in batch as the below procedure:

- 1) Select one camera, and right click to select “Save Config”, and then export the camera's configuration file;
- 2) In “Input the configurations” tab, click “Browser” to select the configuration file of the camera you want to copy, and then select the cameras which should be copied the configuration, Click “Set”.

## 3.4 Tools

There will be some useful tool for the camera application. Now there is the archives file convertor which is used to convert the file format from the private AVI to the normal AVI. The archives in SD card or USB Flash Disk are formatted by the private AVI which is suitable for play control like fast forward, slow play etc. by the private player tool. You can use any normal player to play this converted files like media player, VLC Player etc.



- **Download the archives from the camera:** you can download the archives from the camera through IE (please check the Web Interface user manual for the details) or playback tool which is described in the previous chapter.
- **File Convertor:** Select the archives which were downloaded from the camera by click “Select the Files”, and then click “Browse the Output Folder” to select the destination folder which is the folder to locate the converted files. And click “Start Converting” to convert the files. (It’s ok to covert the one file or many files at the same time.)

## 4 Help

In the right top of the software, please click “Help” button like the below to check the user manual for the details.

Firmware Version			Hard
V2.16.161212			H090