



IP Camera

Quick Start Guide

Welcome

To get started, please follow the Quick Start Guide to set up the connection, web interface, NVR connection, mobile app and the third-party software and hardware.

Get Support:

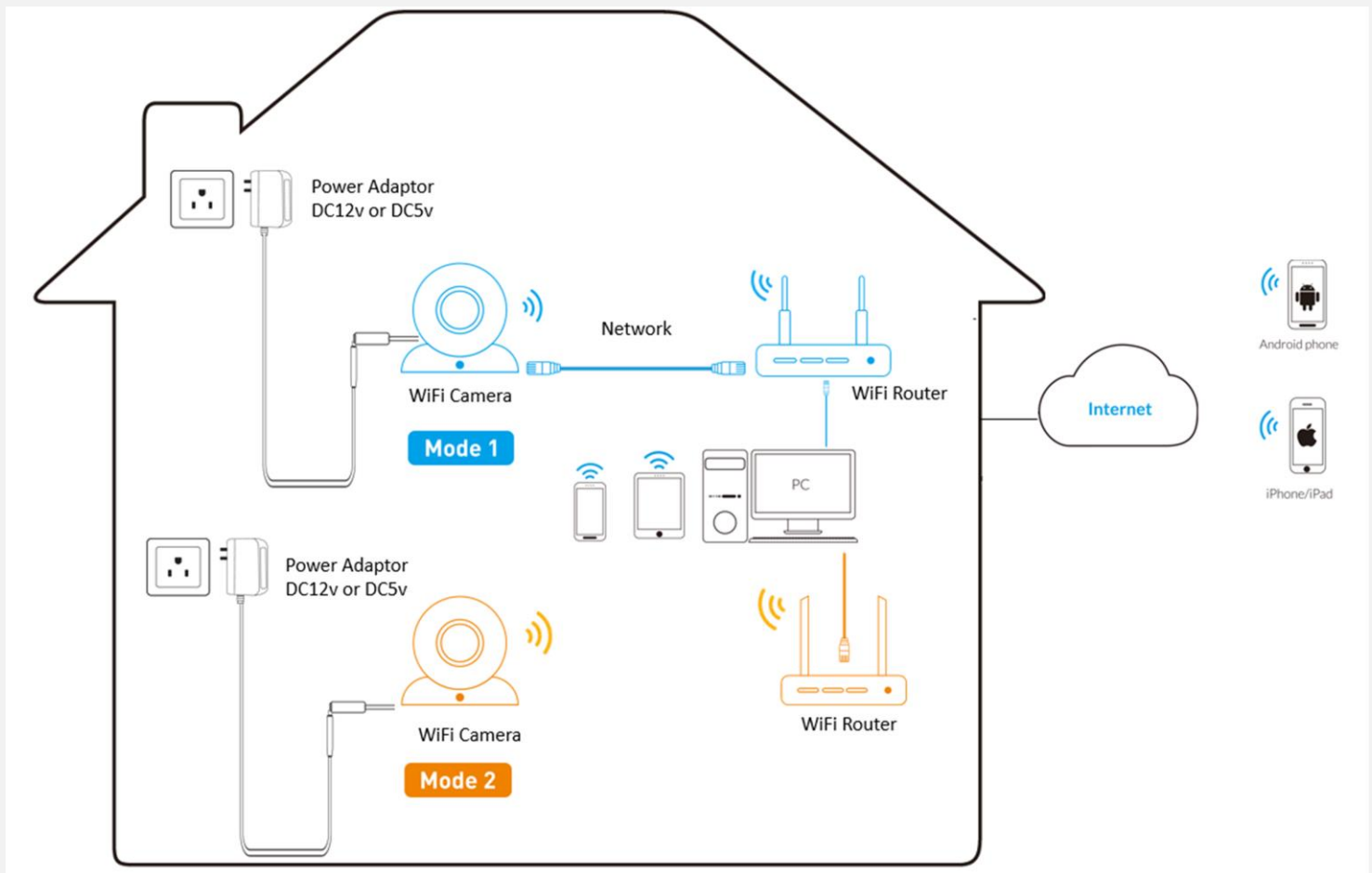
For technical support please send e-mail to support@gwsecurityusa.com

Get Manual and Software:

You may download the Software and Manual from www.gwsecurityusa.com/support

Get Firmware:

Please contact your retailer or send the e-mail to support@gwsecurityusa.com to get the updated firmware.



Attention: There are two connection modes:

Mode 1. For initial setup, connect the camera to the LAN port of the router by an Ethernet cable.

Mode 2. For initial setup, no Ethernet cable connected.

Make sure your camera and smart device are connected to the same router.

To login to the system for the first time, use the following default wired IP address, username and password. Once you've successfully logged in, it is highly recommended to change the password for security reasons.

Default wired IP address of the camera:

Static IP address: 192.168.1.120

network mask: 255.255.255.0

Username: admin

Password: admin

The default HTTP Stream:

<http://192.168.1.120/action/stream?subject=mjpeg&user=admin&pwd=admin>

HTTP Snapshot URL:

<http://192.168.1.120/action/snap?cam=0&user=admin&pwd=admin>



NOTE:

You will be asked to login the camera using the correct username and password after 30 minutes idling.

It's strongly suggested that the camera's password should be changed periodically, and it should be a combination of digits, characters and some special characters.

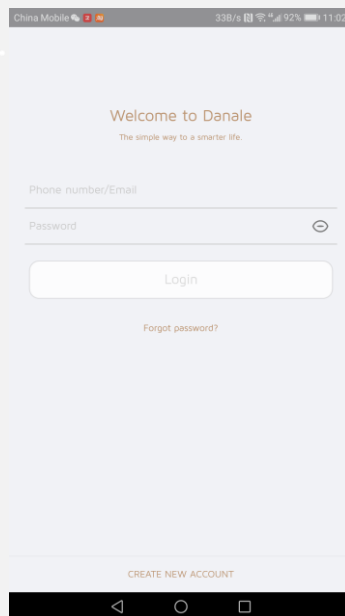
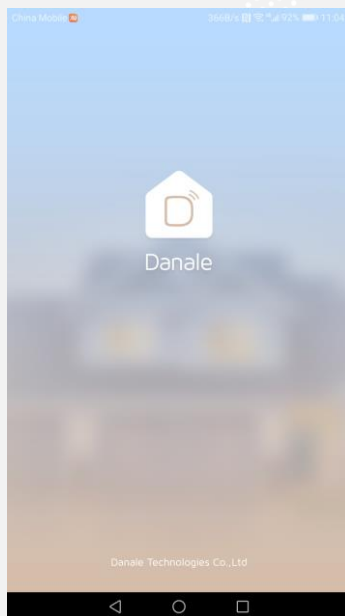
1. Install Danale App

There are two ways to get Danale App:

1. Search “Danale” in App Store or Google Play, download and install the App.
2. Scan the QR code below to download and install the App.



After successfully download and install, please launch and register for an account.

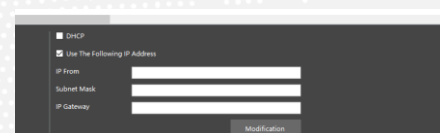
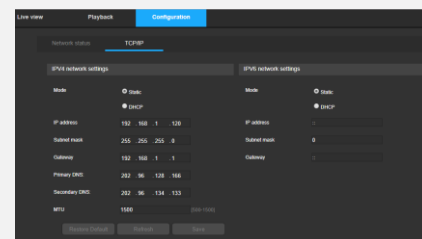


2. Add the Device

• Mode 1

1) Change the camera's TCP/IP settings to **DHCP** mode from web interface or using IPCManager Tool.

- Open browsers (IE/Chrome/Firefox/Safari etc.), fill out the default IP address of the camera: 192.168.1.120
- Change the TCP/IP settings in configuration menu tab.
- Or please install and run IPCManager Tool, then change the searched camera's TCP/IP settings.



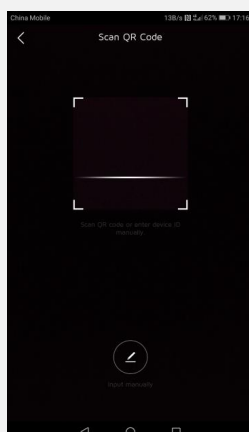
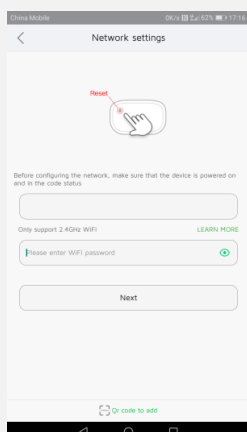
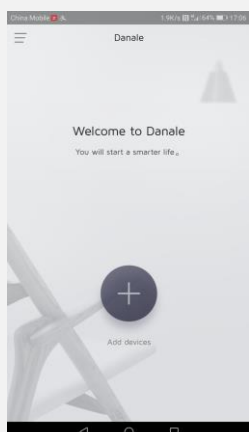
2) Connect your smart phone to the Wi-Fi network of your router.

3) On the App, tap the “+” sign in the middle.

4) Select “QR code to add” at the bottom of the screen.

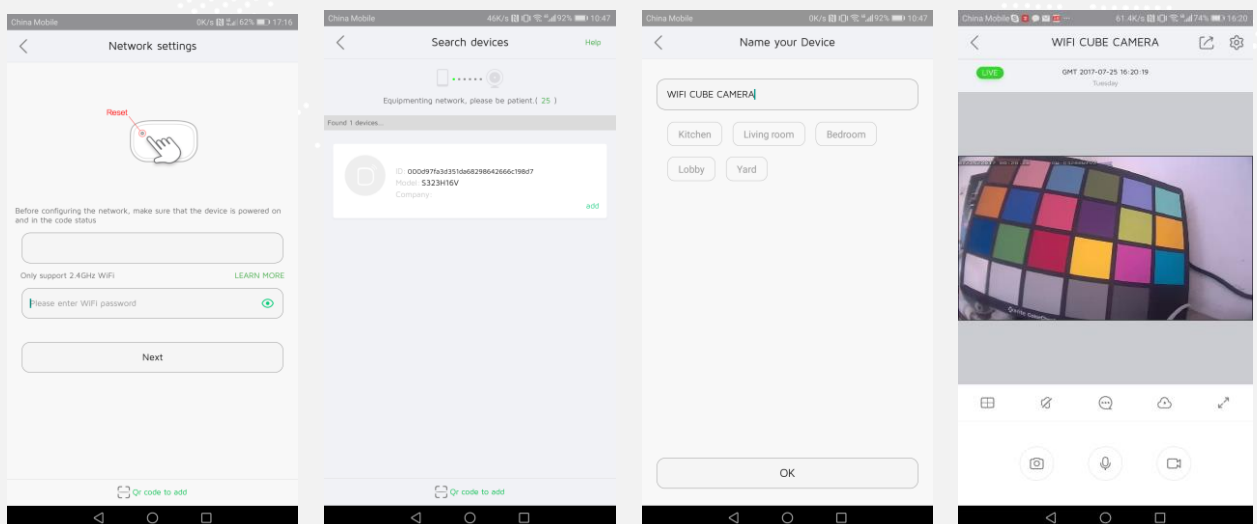
5) Hold your phone steady until the app can read the code on camera body. Make sure the QR code fits inside of the clear box in the middle of the phone screen. Your phone will take you back to the previous page when the scan is successful.

6) Name your camera as requested, wait for a while, then there will be live video.



• Mode 2

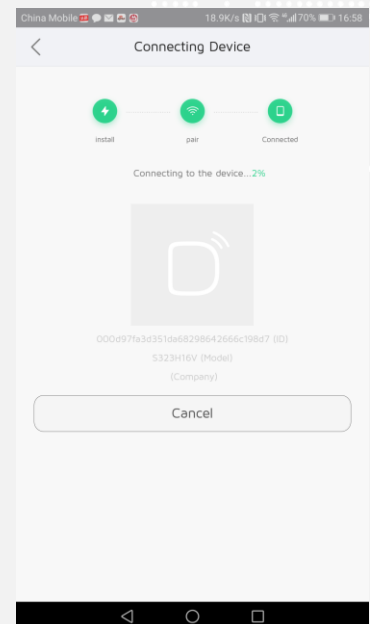
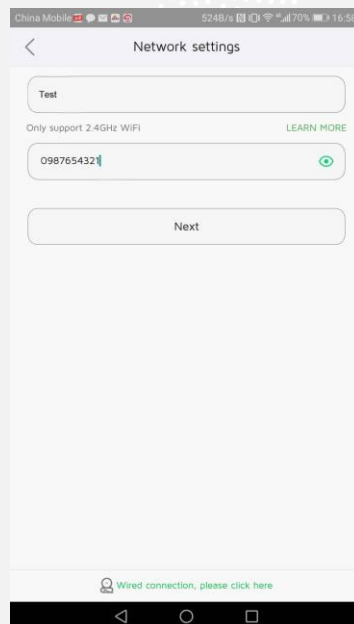
- 1) Connect your smart phone to the Wi-Fi network. There are two methods to add the cameras into the mobile: “scan the QR code” or “network pair”.
- 2) The way of “network pair” is used to add more cameras into the mobile in batch.
 - On the App, tap the “+” sign in the middle.
 - There is Wi-Fi SSID automatically which is the same as the Wi-Fi network the mobile is connected to.
 - Click “Next”, APP will assign the Wi-Fi ID and Password to the all of supported cameras, and ask them to connect to the assigned Wi-Fi.
 - APP will automatically search the cameras which are connected successfully to the Wi-Fi router.
- 3) Select the cameras and Name your camera as requested, wait for a while, then there will be live video.



4)The way of “scan the QR code” is used to add the specified camera into the mobile.

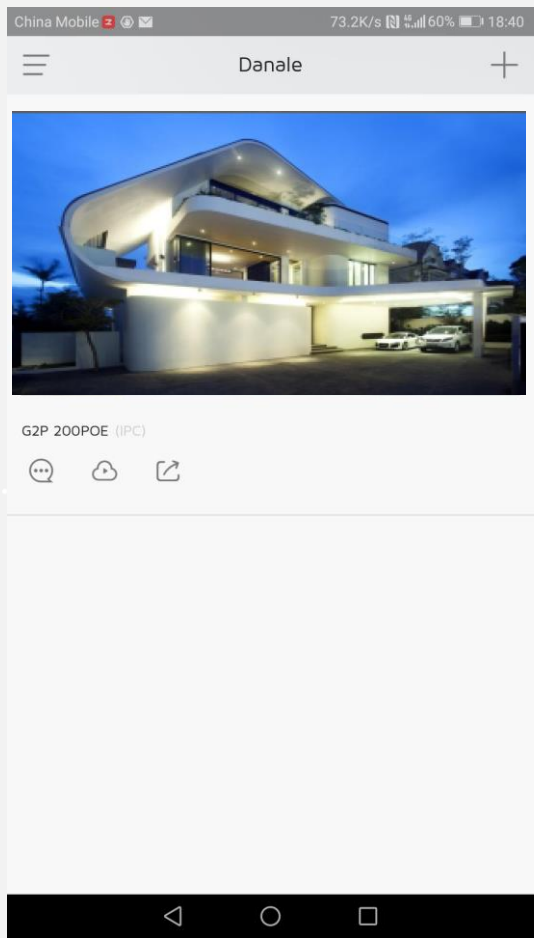
- On the App, tap the “+” sign in the middle.
- Select “QR code to add” in the below.
- Hold your phone steady until the app can read the code on camera body. Make sure the QR code fits inside of the clear box in the middle of the phone screen. Your phone will take you back to the previous page when the scan is successful.
- Next page, please fill out the Wi-Fi password, then click “Next” to assign this Wi-Fi network to this camera.
- APP will connect to the device automatically.

5)Select the cameras and Name your camera as requested, wait for a while, then there will be live video.



3. Live View and playback

Now you can see the Live View page as below.

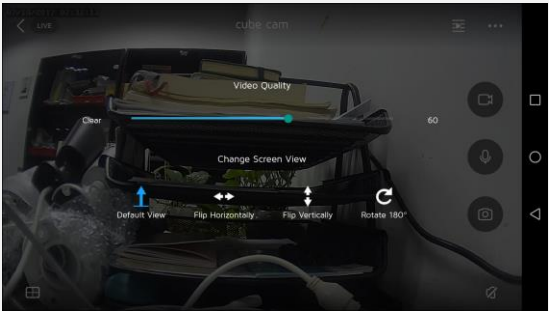


- Message, event message.
 - Archives playback including cloud and SD archives.
 - Scan the QR code to add the new device.
 - Local settings.
- Click on the video to show the camera.

- 4 channels viewing.
- Open speaker.
- Horizontal display.
- Snapshot.
- Open microphone.
- Starting recording.



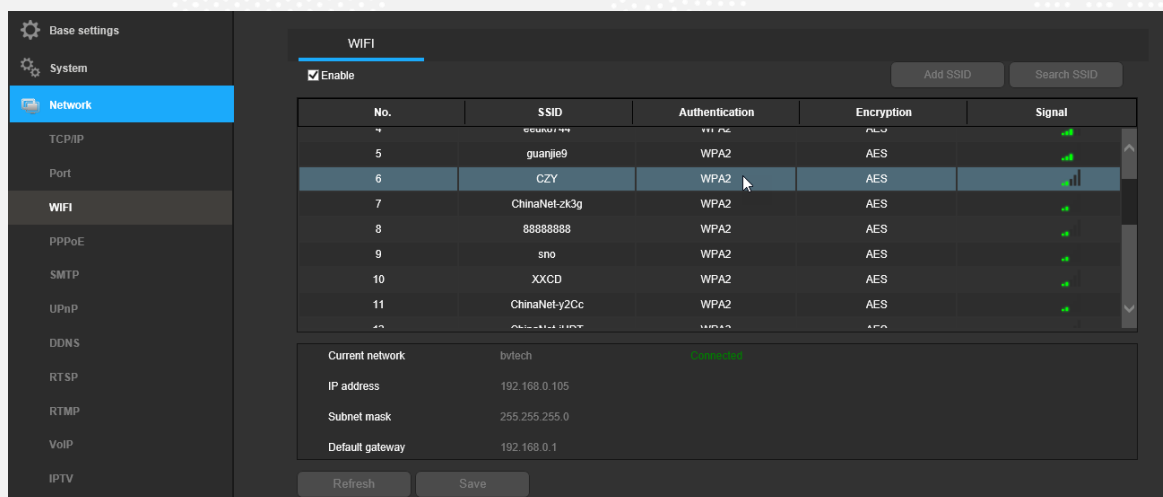
Playback



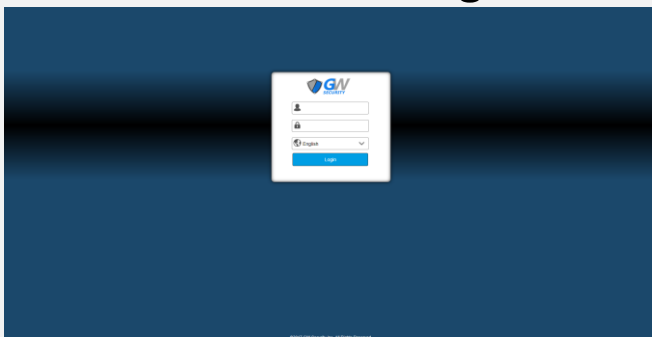
Horizontal display and settings

4. Wi-Fi Settings

1. Use one of the following web browsers: Google Chrome, Mozilla Firefox, Safari, Opera or Internet Explorer.
2. If you know the camera's IP address and HTTP port (default is 80), you can open the browser and fill in the IP address with HTTP port in the URL to open the camera's web interface. For example: `http:192.168.1.120:80`. If you did not change camera's default HTTP port, you can fill in as: `http://192.168.1.120`.
3. Please navigate to the Wi-Fi page (settings/network/Wi-Fi), select and connect to the preferred Wi-Fi network.
4. Remove the Ethernet cable and you can view the camera via wireless connection.



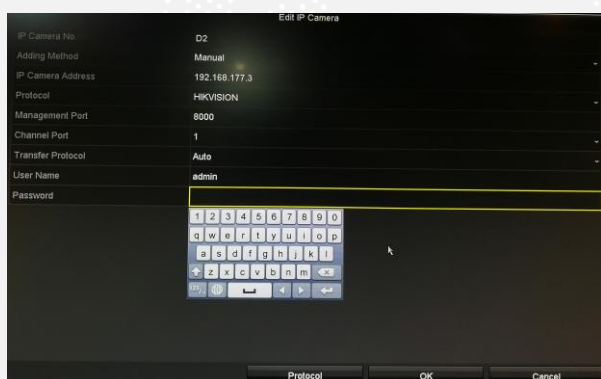
1. Use one of the following web browsers: Google Chrome, Mozilla Firefox, Safari, Opera or Internet Explorer.
2. If you know the camera's IP address and HTTP port (default is 80), you can open the browser, and fill in the IP address with HTTP in the URL to open the camera's webinterface. For example: http:192.168.1.120:80. If you did not change camera's default HTTP port, you can fill in as: http://192.168.1.120.
3. Internet Explorer: When opening the camera's web interface, the browser may prompt you to install a plugin. The plugin is necessary for using the camera's web interface. Click the download link to download the plugin, and then click on the plugin installation file to install the plugin. If the browser prompts you to allow the plugin to work on the computer, please allow to ensure the plugin can run successfully.
4. Other browsers such as Google Chrome, Mozilla Firefox etc.: when opening the camera's web interface, the browser may prompt you to install the Adobe Flash plugin. Please download the Flash plugin and install it. If you already installed the Flash plugin, there is no need to install it again.



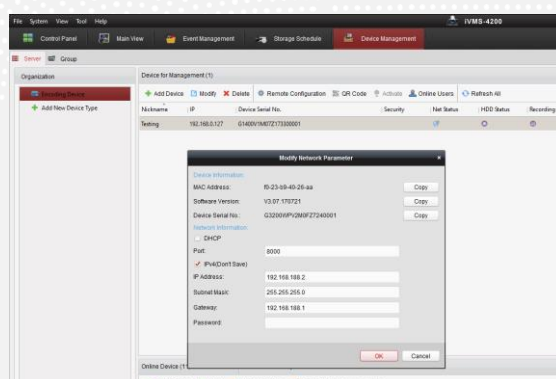


HIKVISION NVR and CMS client software like iVMS-4200 can add the camera using “HIKVISION” protocol or ONVIF.

1. IP Camera Address: please modify it to be on the same IP segment as HIKVISION NVR LAN port or Computer running iVMS-4200.
2. Select Protocol “HIKVISION”.
3. Management port: 8000.
4. Fill out the camera’s username and password.



HIKVISION NVRs



HIKVISION iVMS

ISPY 6.8.2.0

Type: FFMPEG

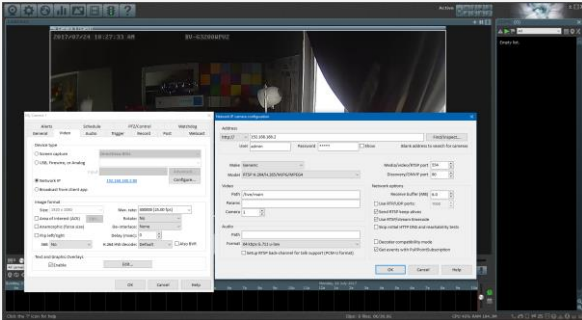
Protocol: rtsp:// Path: /h264

Audio: supported

URL for mainstream: rtsp://IP address:554/live/main

Blue IRIS 4.5.8.6

ONVIF: http://IP address:80/



ONVIF Appliance Software Platform



RTMP Push Live Streaming Broadcasting:



VoIP Compatible Server Software:

